



# The Territory Dog World

Official Publication of Dogs NT

Vol. 45.3 Jun / Jul 2017

**AUST CH  
HARDRADA I'VE PAID THE JUDGE FOR GELDERLAND [AI]  
(IMP NZ)  
aka 'RONAN'**



## AUST CH HARDRADA I'VE PAID THE JUDGE FOR GELDERLAND [AI] (IMP NZ) - aka 'RONAN'



Photo: RUBIS - Judge: Mr. G. Nolan (SA) - 5th November 2016

**CH HARDRADA I'VE PAID THE JUDGE FOR GELDERLAND [AI] (Imp NZL) (aka 'Ronan')**  
(Owned, loved & campaigned by Ms. June Ruge)

Sire: 'UK Ch NZ Gr CH Ch Rolex Rumour Has it (imp NZL)

Dam: 'NZ Ch Hardrada Some Like It Hot (NZL)

I am extremely proud to continue showcasing my beautiful Rottweiler Ch Hardrada I've Paid The Judge For Gelderland [AI] (IMP NZL). Ronan is not only a multi BIS, RUBIS, BIG & Class in Show winner - he is one of my best mates & a valued family member. It has been, to date, an incredible journey & a joyous one, watching this stunning young man develop into such a wonderful representative of the Rottweiler breed. Daily long walks, plenty of games with his favourite toys, eating, watching TV, car rides & sleeping on my bed, are just a few of his favourite things! He is clever, quick to learn & eager to please. He is one very happy lad! I feel so privileged to have him demand so much of my life! Here's hoping we have another very successful year.

# The Territory Dog World

The North Australian Canine Association Inc. Trading as Dogs NT

**Patron: Mrs CN Padgham JP BSc Ag CPAg**

Shean Road  
 Winnellie NT 0820  
 Dogs NT Email: [naca1@bigpond.com](mailto:naca1@bigpond.com)  
 Dogs NT Website: [www.dogsnt.com.au](http://www.dogsnt.com.au)  
 TDW Website: [www.territorydogworld.com](http://www.territorydogworld.com)

PO Box 37521  
 Winnellie NT 0821  
 Telephone: (08) 8984 3570  
 Facsimile: (08) 8984 3409  
 Customer Service Officer: Nicolle Smith

## Council

President	Mel Hammett	Ph: 8988 5809
Vice President	Alan McVilly	
Secretary	Sue Dwyer	Ph: 0428 627 329 Email: <a href="mailto:sue@dwyersaustralia.com">sue@dwyersaustralia.com</a>
Treasurer	Sarah Gordon	
Councillors	Caroline Camilleri Erica Whitehead Reg Dwyer	Email: <a href="mailto:reg@dwyersaustralia.com">reg@dwyersaustralia.com</a>

## Committee Chairpersons

Show Advisory Committee	Marlene Watt & Erica Whitehead
Trial Advisory Committee	Reg Dwyer
Rules Subcommittee	Sue Dwyer
Promotions Sub Committee	Vacant
Public Relations	Vacant
Junior Handler Sub Committee	Caroline Camilleri
TDW Editor	Nikki Jones
Zone Representative Alice Springs	Erica Whitehead
Judges Training Scheme (Conformation)	Reg Dwyer

## Life Members

CN Padgham JP BSc Ag CPAg, R van der Velde, J van der Velde, K Millington, J Kenworthy, R Wing MBE, Charles Atherton BEM, C Sinclair, K Forrester, S Lew-Fatt, S Ripper, Margaret Doyle, Mel Hammett, Erica Whitehead and Bob Whitehead.

*The opinions expressed in contributed information and articles are not necessarily those of the North Australian Canine Association, or of any other parties associated with the publication of the Territory Dog World magazine. The North Australian Canine Association reserves the right to refuse publication of any article or advertisement and while every effort is made to reproduce copy correctly we accept no responsibility for error. The North Australian Canine Association, and all other parties associated in the publication of the Territory Dog World magazine do not accept responsibility for any information contained in this publication.*

M a l e y s

8 9 8 1 2 2 6 6

---

B a r r i s t e r s
a n d
S o l i c i t o r s

## Official Notices

### GENERAL NOTICES

#### TERRITORY DOG WORLD

Next issue is August/September 2017. **Copy Closes 1st July 2017.**

**Cover photo and story** - please contact [naca1@bigpond.com](mailto:naca1@bigpond.com) for **all** information & bookings.

#### INTERNET AND DIRECT DEPOSIT BANKING

Any monies received without accompanying paperwork will be processed as a donation. Without the paperwork we are unable to determine who has sent the money and what is being paid for.

Internet Banking details are:

**Bank:** ANZ

**Account Name:** North Australian Canine Association

**BSB:** 015883

**Account No:** 184779572

#### DOGS NT OFFICE HOURS

Tuesday 11am - 4pm

Thursday 12pm - 5pm

#### WELCOME NEW MEMBERS

We would like to extend a warm welcome to our new & returning Members:

**Chontelle Clark**

**Samantha Overall**

**Louise Ratcliffe**

**Brooke Barnett**

**Ross & Lynn Hutton**

**Marlee Rancher**

**Wes Field**

**Wendy Gaudins**

**Anthony Tran-Nguyen**

**Kristy Trunissen**

**Ayse Yilmaz**

We are pleased that you have joined DogsNT & we hope that you will explore the many opportunities we have to offer & spend time with your dog & enjoying the activities that our Affiliated Clubs have to offer. Details of these can be found within this magazine.

## President's Report

Hi All,

This is the last Presidents Report before our AGM.

I would like to impress upon you all to please attend the AGM as we need a quorum, without one we can't hold it. The AGM is on Wednesday 31st of May.

I hope there will be members who will be willing to come onto council. If we are not able to get the numbers then you can kiss our dog world goodbye. If we don't have enough nominations then we can call for nominations from the floor of the meeting.

The showing season has got off to a good start, there was a few glitches but with some luck and hard work these glitches were sorted out.

The major part of the show season will be starting soon with Alice Springs, Tennant Creek, Show Dog Handlers, Darwin Royal, Gundog Specialty and Canine Expo totalling approximately 17 shows and Darwin Ladies Extravaganza, 6 shows in 2 days indoors in airconditioned comfort at Darwin Turf Club.

Wish you all good luck.

Cheers,

Mel Hammett



Social Media policies are now in place in most states of Australia. Fines of up to \$1000 have already been issued. You could be in breach in more than one state. Type with caution.

Dogs NT Social Media Policy can be found on the website under Section 12 of Constitution, Rules & Codes



## ANKC Notices

### FRENCH BULLDOG TASKFORCE

In response to the increasing level of possible fraud in the breeding and registration of French Bulldogs and other breeds, the ANKC Ltd Board of Directors has appointed a Taskforce with the following Remit.

*Identify alleged fraudulent dealings in the ANKC Ltd Registration System, record them and refer them to the appropriate Member Body for investigation.*

*Investigate measures to reduce the opportunity for fraudulent dealings in the ANKC Ltd Registration System, including but not limited to DNA Testing, introduction of Litter Registration Limitations and examination of the implementation of Regulations Part 6.*

The Taskforce has received a substantial amount of valuable information from concerned members and in following up this material will be taking the following action.

Flag all suspect imported dogs and semen.

Flag all suspected prefixes that have been identified as breeding non allowable coloured dogs.

Through the appropriate Member Body appoint "Compliance Investigative Panels" to identify breeders and suspected mismarked dogs who are on the Main Register by microchip scanning and visual identification of the colour of the dog, any dogs identified as being registered on the Main Register who are not a recognised colour to be downgraded to the Limited Register.

Suspected breaches of the Regulations arising from these investigations will be referred to the breeders Member Body for action.

Although the Taskforce had initially been appointed to address the French Bulldog problem it will also investigate alleged fraudulent breeding and Registration practices in other breeds, including but not limited to, British Bulldogs, Pugs and Staffordshire Bull Terriers.

### CANINE RESEARCH FOUNDATION – GRANTS AWARDED FOR 2017

The Canine Research Foundation is a Public Charitable Trust to support research conducted at Australian universities from funds generated via the levy on puppy registrations, fund raising functions, tax-deductible donations and bequests from the public. The purpose of the Foundation is to provide funding for research directed at improving canine health. Canine health refers to research into disease and disease related processes, and/or the prevention of injury and/or disease.

The CRF was founded by the VCA in 1992 and 111 research grants have been awarded for projects through to those commencing in 2017. Just over 1.3 million dollars of funding has been distributed since 1992 for research. Funding to the CRF is received from all ANKC Ltd Member Bodies.

Current trustees of the Canine Research Foundation are: Professor Brian Corbitt (President), Mr Roger Bridgford, Ms Louise Brodie, Dr Steve Holloway, Associate Professor Jan West, and Mr James Rodger.

## ANKC Notices



### CANINE RESEARCH FOUNDATION – GRANTS AWARDED FOR 2017

In 2017 five grants were successful in receiving funding and summaries of the projects are outlined below.

#### **Distribution of genetic mutations associated with degenerative myelopathy**

(Dr Jayne McGhie, University of Queensland)

Canine degenerative myelopathy (DM) is a non-treatable disabling neurodegenerative disorder characterized by progressive motor neuron loss and paralysis that culminates in death (commonly by euthanasia). It affects mature dogs in a range of breeds. Recently a mutation in the canine superoxide dismutase 1 (SOD1) gene has been identified as strongly linked to the disease. Genetic testing offering a means to rapidly identify non-clinically affected dogs that are potentially at risk. This knowledge can be used to make breeding decisions to reduce the incidence of DM.

German Shepherd and related Shepherd breeds have a high incidence of DM. The current project aims to test non clinical working shepherd dogs and associated breeding shepherd populations (including any pups) to: (a) estimate the frequency of the deleterious mutation for DM, together with a selection of other known diagnostic markers of disease in these breeds, and (b) inform future breeding strategies to reduce the incidence of this disease in the population. In collaboration with the Queensland Police Force, we will use state-of-the-art genetic testing equipment (Sequenom) and expertise within the University of Queensland to genotype a random sample of 150-200 working dogs, breeders or pups. Expected outcomes beyond the aims above include development of a testing capability for disease diagnosis and preventative medicine that can be applied across a range of breeds in Australia, longitudinal study of the health and well-being of these working animals, and creation of a genomic biobank of DNA for German Shepherds for future research purposes.

#### **Bacterial vaccine against canine pyometra**

(Dr Natalie Krekeler, University of Melbourne)

Pyometra (pus in the uterus) is a life-threatening infectious disease in bitches. Up to 25% of un-spayed bitches develop the disease before they reach ten years of age, and most of them die if they are left untreated. However, even if they are treated, most bitches will lose their reproductive potential, as a surgical intervention (spaying) is often the treatment of choice by veterinarians. *Escherichia coli* (*E. coli*) are the bacteria most commonly isolated. So far no preventative measures other than spaying are available. In a previous study we have tested a killed vaccine against certain bacterial virulence factors, which did not lead to the desired antibody response in the animals. This was most likely due to the fact that a killed vaccine was used. We now propose to generate a live-attenuated *E. coli* vaccine using a novel technique. Inactivating certain virulence genes in these bacterial strains has shown effective in a previous experiment with similar *E. coli* causing disease in birds. It allows using a live bacterial strain as a vaccine candidate, which is more likely to raise a satisfactory antibody response than a killed vaccine.

## ANKC Notices



### CANINE RESEARCH FOUNDATION – GRANTS AWARDED FOR 2017

#### **A safety trial of next generation cancer vaccines and targeted IL-15 plasmid therapy**

(Dr Christopher Weir, Kolling Institute)

Approximately 1 in 3 pet dogs will be diagnosed with cancer in their lifetime. While some canine cancers can be treated with surgery, chemotherapy and radiotherapy, expense and availability may prevent many dogs receiving treatment. Novel immune based therapies provide another potential weapon to fight canine cancer. We have developed a next generation cancer vaccine (NGV). The vaccine presents a patient's own tumour proteins back to the immune system together with a unique stimulant (RZ-1) and an adjuvant (Advax). Pre clinically we have shown this new vaccine approach is superior in efficacy to the currently marketed canine cancer vaccine. We have also developed targeted plasmid IL-15 therapy which is delivered directly into the tumour to stimulate immune cells inside. The next step is to show safety of the NGV with or without IL-15 therapy in canine cancer patients.

Canine patients with externally accessible tumours who have failed or have no option of standard of care therapy will be offered a place in the trial. Dogs will be placed into groups 1) Vaccine only 2) Combined Vaccine and Inter tumoural vaccine 3) IL-15 therapy 4) IL-15 + Vaccine.

The dogs will be assessed for adverse reactions to the vaccine/IL 15 therapy during and after the treatment period and monitored for tumour progression or regression. Blood samples will be collected to assess immune cell levels and for cytokine analysis. Dogs showing no adverse reactions to the therapies and perceived benefit will be offered further treatments after a period of 3 to 6 months.

#### **Biomarkers of canine glaucoma – early detection and disease progression**

(Dr Andrew White, University of Sydney)

Glaucoma is a leading cause of blindness worldwide with the incidence in humans similar to rates reported in dogs. The pathophysiology of glaucoma is complex, multifactorial and incompletely understood. Progress in our understanding of the disease, its management and the prevention of progressive vision loss, has therefore been slow.

The use of dogs over rodents as models of disease in ophthalmology has advantages including a larger eye that lends itself easily to surgical manipulation and a visual system that is adapted to vision in both day and night. In order to determine whether dogs can be used as an effective model of disease of glaucoma in human patients, we must determine how to monitor disease progression and/or response to treatment objectively and determine similarities and differences between the species. We will investigate several clinically relevant potential biomarkers in canine glaucoma. A biomarker is a measurable anatomic, physiologic, biochemical, or molecular parameter indicative of a normal or pathologic process, disease state, or of a response to an intervention. Biomarkers might include physiological measurements, blood tests, genetic, metabolic data, or measurements from images. We will look to objectively measure disease progression and determine if and when glaucoma and its progression can be detected earlier and more accurately than it currently is. This will subsequently allow development of clinical trials and interventions targeted at a much earlier stage, with potential for greater effects, compared to what is achieved with current treatments.



## ANKC Notices



### CANINE RESEARCH FOUNDATION – GRANTS AWARDED FOR 2017

#### Imaging and monitoring osteosarcoma with a novel radiolabelled peptide

(Assoc Prof Chiara Palmieri, University of Queensland)

Canine osteosarcoma is a common and aggressive bone cancer in dogs, with high mortality rate and less than 20% of affected patients surviving more than 2 years with standard therapy. The lack of specific and successful drugs and the prohibitive costs of treatment for the management of this tumour in dogs indicate the need for new diagnostic and therapeutic approaches. Cancer cells express many proteins that can be used as molecular targets. c-Met is a specific protein highly expressed in canine osteosarcoma and related to tumour growth and invasion. Developing a non-invasive and safe tool that could measure the expression levels of c-Met in real time would enable early diagnosis of canine osteosarcoma and facilitate the mechanisms to monitor the impact of treatment using new c-Met therapies. We will use a targeted diagnostic agent specific for c-Met to imaging and monitoring canine osteosarcoma in vivo. The key aims of this project will be the validation of this new imaging agent for osteosarcoma in dogs which will improve tumour monitoring (to identify residual cancer cells after therapy) and therapy selection (to identify patients who require further and/or different treatments).

Further information on the Canine Research Foundation can be found at: <http://oz.dogs.net.au/crf/>

Updates provided on the CRF FB page

<https://web.facebook.com/AustralianCanineResearchFoundation/>

## ADVERTISING PUPPIES OR ADULT DOGS ?



#### Please Note:

As of October 2015, under the ANKC Code of Ethics, it is mandatory for an ANKC Ltd Member Body Membership Number to be displayed on any advertisement for dogs or puppies, whatever the media

## Other Articles

### Juvenile Laryngeale Paralysis and Polyneuropathy (JLPP)

*The following article was written by Dr. Prof. Peter Friedrich, President of the German Kennel Club, breed judge, working judge and member of the breeding committee of Allgemeiner Deutscher Rottweiler Klub (ADRK), and is being published with permission of the VDH, the ADRK and Total Rottweiler Magazine for the translation.*



#### **Introduction: Genuine Breeder or Puppy Producer?**

With the promotion of HEALTHY dog ownership it would seem obvious that breeders would embrace DNA tests available for their breed. Yet this is not the case. A serious problem has arisen in Rottweilers called Juvenile Laryngeal Paralysis and Polyneuropathy.

Dogs with this condition can develop repeated bouts of inhalation pneumonia, often resulting in death or can even have bouts of severe choking. A DNA test is now available for this horrendous condition and one would hope that breeders everywhere utilise this to rid the breed of this mutation.

The genuine breeders will do so.

**Dr Robert Zammit BVSc**

The article on JLPP sets out in detail what is in this severe disease, how it is inherited, and how and why it must be fought. Although it is hoped that the disease is not yet widespread, complete testing of all breeding animals must continue.

It is expressly emphasised that at most adult dogs are carriers of the disease, even if they cannot fall ill, because the disease had shown at a young age.

In Germany, as of November 1, 2016, breedings may only be carried out with animals that have been tested for JLPP. This means that of all the animals that are to be found in breeding use, an oral mucosa sample must be taken and evaluated, and the result must be entered in the pedigree. Samples (in duplicate) must be taken by an LG-breed warden, breeding judge or veterinarian and samples sent to the laboratory Laboklin for investigation. Before mating, the owner of the dogs involved must access the pedigree to verify that each pairing is permitted in the future.

**ADRK Executive Board**

## Other Articles

### Juvenile Laryngeal Paralysis and Polyneuropathy (JLPP)



*Type A individual = homozygous unaffected genotype: the dog's genetic make-up is homozygous unaffected ("completely clear"). Neither allele has the unfavourable mutation. In layman's terms: the dog has two good alleles. This dog will never develop JLPP. The more dogs in the population which are like this, the better.*



*Type B individual = carrier: the dog's genetic make-up is heterozygous. One allele is free from the unwanted mutation, and the one allele has it. In other words: the dog has one good and one bad allele. This dog is a carrier of the disorder, but it will never develop JLPP. This is where the recessive hereditary of the disease proves fortunate: only dogs with two mutant alleles can develop the disease. Dogs with only one "bad allele" are spared this outcome. In the context of a well-considered breeding program, gradually reducing the incidence of this gene constellation over generations is desirable. However, its presence is not of concern as long as an adequate number of homozygous unaffected dogs are available in the breeding pool.*



*Type C individual = homozygous affected genotype: the dog's genetic make-up is homozygous affected. Both alleles carry the unfavourable mutation. This dog, in other words, has two bad alleles. This dog will develop JLPP. It is absolutely imperative that breeding programs ensure this gene constellation cannot arise.*

*The importance and relevance of genetic information for breeders becomes evident when we look at what happens when individuals with different genetic characteristics are mated. We can begin our exploration of this by remembering that Type C individuals with homozygous affected alleles never enter the breeding pool because they die at a young age.*

#### 1. What is JLPP?

The symptoms of Juvenile Laryngeal Paralysis and Polyneuropathy (JLPP) have become apparent in Rottweilers in recent years. I would like to begin with an outline of the symptoms that are characteristic for this disorder and its typical progression, at first explaining where the term itself comes from.

Neuropathy is a word used to describe a severe disorder of the nervous system. The prefix "poly" indicates that neuropathies can affect many different parts of the body at the same time. In a healthy body, nerve structures control muscles and perform a range of complex additional functions. In its fully expressed form, polyneuropathy causes control over the muscles to be lost to an ever-greater degree, until it is ultimately lost entirely.

Pronounced symptoms of paralysis of the larynx and the surrounding tissue comprise the second component of JLPP. The onset of the disease is typically marked by breathing problems in affected dogs, especially during physical exertion or when they are excited. Dogs may cough when eating or drinking, and the sound of their bark often changes. This is followed, somewhat later, by a loss of coordination in the hind limbs and subsequently also the forelimbs. These symptoms worsen until the dog is unable to move. The disorder typically appears either shortly after weaning age or in somewhat older juvenile dogs. The risk of misdiagnosis cannot always be eliminated.

The disease causes immense distress to affected dogs. It is inevitably terminal; no cure exists. We can consider ourselves lucky, that its appearance can be avoided with absolute certainty. This situation

represents the best possible scenario for everybody seeking a Rottweiler puppy.

#### 2. What is the Genetic basis for the condition?

Juvenile Laryngeal Paralysis and Polyneuropathy (JLPP) in Rottweilers is a hereditary disease. Its mode of inheritance is monogenic autosomal recessive. It is caused, in other words, by a mutation in a single genetic locus which is not located on the chromosomes deciding a dog's sex (so not on the X or Y chromosomes). The concept of recessiveness relates to the natural laws which determine whether genes trigger disease.

## Other Articles

### Juvenile Laryngeal Paralysis and Polyneuropathy (JLPP)

#### 3. What will happen if this is ignored, and what action must Rottweiler breeders take now?

Fortunately, a reliable DNA test has come onto the market.

Discovering whether a dog's genetic make-up is homozygous unaffected ("completely clear"), heterozygous (a carrier) or homozygous affected is now relatively straightforward and inexpensive. This test has demonstrated that the gene responsible for the disorder is present in our Rottweiler population: it has been shown that carriers exist. We don't know how many fatal cases of the disease have already occurred. Attempting to trace the problematic genetic heritage of dogs back to particular ancestors does not represent a fruitful approach to the issue: the best way forward lies in the adoption of genetic testing.

At this point, let us imagine, for the sake of argument, a scenario in which very few Rottweilers were carriers. If that were the case, some people might reject the option of testing on cost grounds, as well as for other reasons: measures to counteract a rare disease might strike them as disproportionate. In their innermost selves, they might also harbour deep-seated fears that they would no longer be able to breed from one of their most successful dogs without restrictions. A few people might handle the resultant stress by going into denial and refusing to engage with the issue or find out more about it. Knowing nothing about the disorder, they would then not need to factor it into their thinking. If you are in any way tempted to react in this way, please consider changing your attitude, even if you find this difficult, for the sake of the Rottweiler.

Please wake up to the fact that responsible, ethically justifiable and legally compliant dog breeding must necessarily rest on more solid foundations. The risk of the mutant gene slowly but steadily spreading throughout the population is unacceptably high. Over years, the number of carriers would rise higher and higher, and sooner or later the number of fatal cases of the disease would also rise drastically. We know all this. And we must draw the logical conclusions from what we have learned.

From now on, or, more accurately, after an appropriate transition period, to allow time for the necessary tests to be carried out, every single breeder may only breed from dogs that have been identified as homozygous unaffected ("completely clear") or as carriers. Carriers may only be bred with homozygous unaffected ("completely clear") animals. Flomozygous unaffected ("completely clear") dogs may be bred with both homozygous unaffected ("completely clear") dogs and with carriers. The procedure specified here ensures that NO more Rottweilers will develop JLPP.

The ADRK Board has, quite correctly, and, after consultation with the breeding Committee, now adopted a resolution to this effect. It will go on to produce a list of authorised genetic laboratories of assured quality. Independently of any club regulations, the same duty to take action can also be derived from the German Protection of Animals Act, which each and every one of us is bound by. But let this be clear: our desire to breed healthy, sociable, energetic, and fun-loving Rottweilers that are true to type comes from the bottom of our hearts.

It is not something we do only for the sake of complying with legislation.

I perceive the same ethical duty to adopt precisely this approach in every country where Rottweilers are bred, be that Germany or any other nation.

## Other Articles

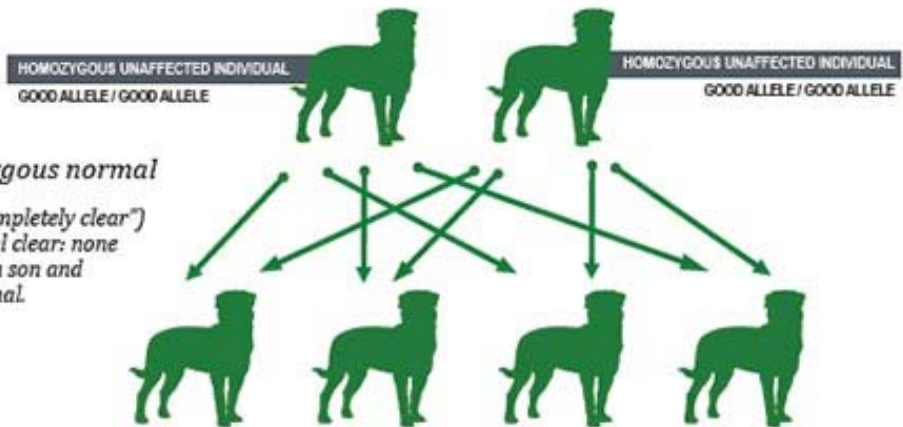
### Juvenile Laryngeal Paralysis and Polyneuropathy (JLPP)

Diseases do not respect national borders. The suffering of animals does not stop at national borders. Friends of the Rottweiler across the world, on every continent and in every country are challenged to act on this issue. Nothing and nobody can free any breeder from this duty. Whether the relevant local breeding regulations already contain provisions dealing with JLPP, matters not a jot in this regard.

#### Pairing example 1

*homozygous normal X homozygous normal*

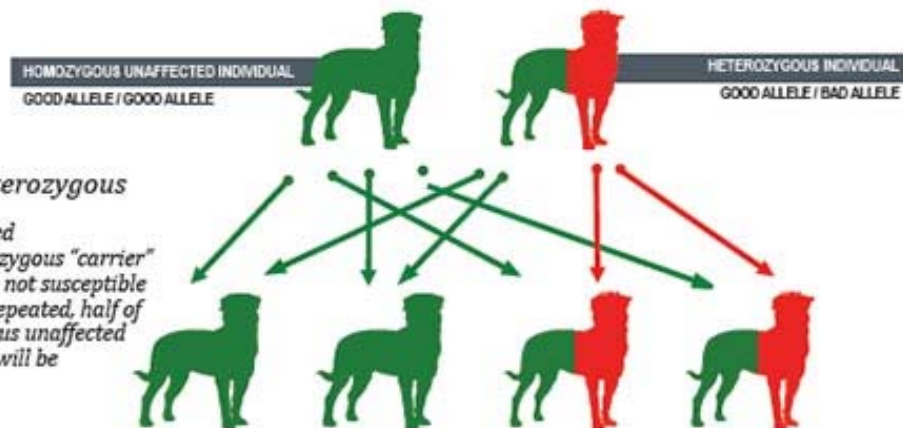
*When two homozygous unaffected ("completely clear") animals are bred, the situation is crystal clear: none of their offspring can develop JLPP. Each son and daughter will also be homozygous normal.*



#### Pairing example 2

*homozygous unaffected X heterozygous*

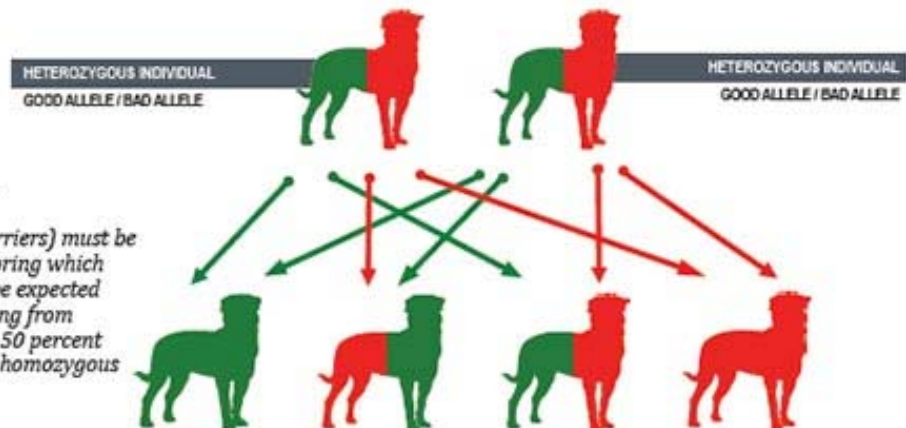
*Pairings between homozygous unaffected ("completely clear") animals and heterozygous "carrier" animals also lead to offspring which are not susceptible to JLPP. If such pairings are frequently repeated, half of the offspring will typically be homozygous unaffected ("completely clear") and the other half will be heterozygous (carriers).*



#### Pairing example 3

*heterozygous X heterozygous*

*Mating two heterozygous animals (carriers) must be avoided at all costs. It can lead to offspring which develop JLPP. In large samples, it can be expected that 25 percent of the offspring resulting from such pairings will develop the disease, 50 percent will be carriers and 25 percent will be homozygous unaffected ("completely clear") dogs.*



## Other Articles

### Juvenile Laryngeal Paralysis and Polyneuropathy (JLPP)

#### In Conclusion

In conclusion, it may be noted that other dog breeds have already profited from the successful implementation of similar breeding programs. Several diseases with the same mode of inheritance have already been eliminated in this way: for example polyneuropathy in Greyhounds (a relatively similar form to the disease affecting Rottweilers) and progressive retinal atrophy (PRA) in Sloughis.

Counter-measures against JLPP in Rottweilers are exceptionally likely to prove successful, not least because no other genetic tests are currently in routine use in their breeding.

#### HOW CAN I TEST MY DOG?

##### *Information provided by Schwarzbear Rottweilers*

The ADRK brought in compulsory testing of all breeding dogs to be tested, prior to mating, from the 1st November, 2016. Their pedigrees were endorsed with the result of such test and allowable breedings were Clear to Clear, Clear to Carrier only. This disease, with careful breeding, can be eradicated.

This article was printed to educate and to encourage all Rottweiler breeders in Australia to test their breeding stock.

**Laboklin.Co.UK** - <http://www.laboklin.co.uk>.

Just download form and instructions.

Can order kits but will accept swabs from your vet. Vet to verify dog's details, swabs and complete form. Note special discount price for ANKC members who include a copy of membership card: £44 GBP. Usual price £48.

Test for 3+ puppies: £42.

Can also test semen: additional price is £25 + £44.

**Laboklin.Germany** - <http://www.laboklin.de/>

Just download form and instruction. Kits can also be ordered. Usual price: E59.50. Apply for breeders discount price: E46.

**OFA USA** - <https://www.ofa.org/>

Go on line and order kit. (Can only use their kits.)

Price: \$65 USD.

#### **For more information**

Join the Facebook page for JLPP Australia - <https://www.facebook.com/groups/JLPPinRottweilers/>

#### **To help develop test in Australia**

Need 6 to 20 samples (preferably blood) but will accept swabs of carriers/affected to:

Dr. Mourad Tayebi

Veterinary Biosciences (Melbourne)

[mourad.tayebi@unimelb.edu.au](mailto:mourad.tayebi@unimelb.edu.au)

Ph: 0478 921 309.

## Show and Trial Schedules



**FRED'S PASS POSITIVE DOG TRAINING CLUB INC.**  
 Will host the following trials in June / July 2017



### JUNE 2017

**Friday 9th June**

Obedience and Rally O

**Saturday 10th June**

Double Rally O

**Judge:**

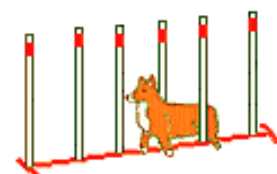
**Ms Elaine Temby (ACT)**

**Judging Commences**

Friday at 7pm Saturday 6.30pm

**Entries close:**

**30th May 2017**



**Saturday 23rd June**

Agility Jumping All Classes

**Sunday 24th June**

Agility Jumping All Classes

**Judges:**

**23rd June 2017 Sarah Baker (NT)**

**24th June 2017 Chavonne Carroll (NT)**

**Judging Commences**

Friday at 7pm / Saturday at 6.30pm

**Entries close:**

**9th June 2017**



### JULY 2017

**Friday 14th July**

Games (All Classes)

**Saturday 15th July**

Agility Jumping (All Classes)

**Judge:**

**Ms Kendal Olson (TAS)**

**Judging Commences**

Friday at 7pm Saturday 6.30pm

**Entries close:**

**30th June 2016**



**Entry Fees**

**Members:**

**Agility Games:** \$11.00 first entry includes DogsNT levy, \$11.00 additional

**Obedience:** \$11.00 first entry includes DogsNT levy, \$11.00 additional

**Rally O:** \$11.00 first entry includes DogsNT levy, \$11.00 additional

**Non Members:**

**Agility Games Obedience Rally O:** \$15.00 each entry includes DogsNT Levy



**Catalogue:**

Free if emailed, \$1 for hardcopy to be paid with entry.

**Not for Competitions:** \$2:00

**Postal Entries:** PO Box 1167 Palmerston 0831

Please refer to [www.fppdt.org.au](http://www.fppdt.org.au) or contact the club on [training@fppdt.org.au](mailto:training@fppdt.org.au) for full schedule  
 Or Call Sue 0428627329

**Judging Order as per Catalogue.**

## Show and Trial Schedules

**Entries Close 16 June 2017 (or 2 June at the CASS Office)**

### CENTRAL AUSTRALIAN SHOW SOCIETY

#### Championship Dog Show

**Friday 7th July 2017 - Blatherskite Park, Alice Springs, NT**

<b>Judge:</b>	Mr Thomas Tancred (NSW)
<b>Judging Commences:</b>	09.00am (Check in: 08.30am)
<b>Classes:</b>	1, 2, 3, 4, 5, 9, 10, 11, 18, Dogs and Bitches
<b>Special Classes:</b>	Junior Handlers - <b>ENTRY:</b> Gold coin donation (Prizes: donated by ASKDSC)
<b>Order of Judging:</b>	1, 2, 3, 4, 5, 6, 7, General Specials, Junior Handlers CASS Reserves the right to change the judging order if required
<b>Club Competition:</b>	Yes <b>Catering:</b> Yes
<b>Entry Fees:</b>	<b>CASS Members:</b> 1st entry \$13.00 (includes Levy), \$11.50 subsequent entries. No dog to be entered in more than 1x ordinary class <b>Non CASS-Members:</b> 1st \$45.50 (includes Levy) \$22.50 subsequent entries. No dog to be entered in more than 1x ordinary class
<b>Catalogues:</b>	<b>NB:</b> bound catalogue for 6x shows to be paid with <b>ASK&amp;DSC entries</b>
<b>Trophies:</b>	BIS, RUIS, BIG & RUBIG, Classes in Show & Group: Ribbons & Prizes (CASS)
<b>Exhibition Manager:</b>	Bob Whitehead – (AH) 0407 713 026 (no calls after 9pm please) CASS - phone: 08 89521651 CASS - email - cass@alice-springs.com.au
<b>Entries To:</b>	ASK&DSC PO Box 4288 ALICE SPRINGS NT 0871 <b>Online Entries Preferred</b> www.showmanager.com.au Please include email address on entry forms
<b>Direct Deposit and Internet Banking:</b>	BSB: 035-303      Account: 318913 Please include exhibitors name as reference on internet banking transfer.
<b>Notes:</b>	<b>NO LATE ENTRIES WILL BE ACCEPTED.</b> No posted entries will be accepted without Official CASS dog entry form, ANKC recognised entry forms & proof of payment. CASS dog entry forms are available from Administration Office, show/book or downloaded from website: www.alice-springs.com.au CASS reserve the right to amend judging order & times. <b>CASS membership:</b> \$70 family, \$50 double, \$30 single, \$10 Junior/Aged pensioner. Non member entry fee inc 1x gate ticket, 1x SINGLE entry ticket for 1x day, 1x car pass per exhibitor. Please enclose \$3 with your entries if you wish the Administration Officer to mail your membership to you. All camping fees available on official CASS form. All campers MUST report to CASS office on arrival, before proceeding to designated Dog Show Camping Areas.





## Show and Trial Schedules

**Entries Close 11 June 2017**

**ALICE SPRINGS KENNEL & DOG SPORTS CLUB**

**Championship Dog Show**

**Gail & Ian Taylor Memorial Show**

**Friday 7th July 2017**

<b>Judge:</b>	<b>SHOW #399</b> – Mr John Comerford (NSW)
<b>Judging Commences:</b>	<b>SHOW START</b> - 0900hrs
<b>Classes:</b>	<b>SHOW #399</b> - 1, 2, 3, 4, 5, 9, 10, 11, 18, Dogs and Bitches
<b>Order of Judging:</b>	<b>SHOW # 399</b> - 4, 5, 6, 7, 1, 2, 3, General Specials ASK&DSC Reserves the right to change the judging order if required
<b>Club Competition:</b>	Yes <b>Catering:</b> Yes
<b>Entry Fees:</b>	<b>Members:</b> 1st to 5th entries \$16.00 (includes Levy), \$12 subsequent entries, no dog to be entered in more than one ordinary class <b>Non-members:</b> 1st to 5th entries \$19.00 (includes Levy), \$15.00 subsequent entries, no dog to be entered in more than one ordinary class
<b>Catalogues:</b>	\$15 for bound 6 show combined catalogue to be paid with entry
<b>Trophies:</b>	Prize/Sash - BIS, RUIS, All Classes In Show Prize/Sash - BIG & RUIG. Ribbons - Classes In Group
<b>Exhibition Manager:</b>	<b>SHOW#399</b> – Bob Whitehead – (AH) 0407 713 026 (no calls after 9pm please) alicespringskennelclubinc@yahoo.com.au
<b>Entries To:</b>	ASK&DSC PO Box 4288 ALICE SPRINGS NT 0871 <b>Online Entries Preferred</b> www.showmanager.com.au Please include email address on entry forms so exhibitors can be informed that entries have been received
<b>Direct Deposit and Internet Banking:</b>	Bank: Westpac    Account Name: Alice Springs Kennel Club BSB 035-303    Account 100527 Please include exhibitors name as reference on internet banking transfer.
<b>Notes:</b>	If camping on the grounds please ensure it has been arranged with, and paid to, Blatherskite Park prior to arrival.  <b>There will be a roast meat &amp; cold buffet for sale on Saturday Night at \$15 a plate (with beverage) which can be prepaid with entry fees.</b>  DUE TO CHANGES IN DELIVERY TIMES OF AUSTRALIA POST, PLEASE ENSURE ENOUGH TIME FOR POSTED ENTRIES TO REACH ALICE SPRINGS  Canteen available and license after midday.



## Show and Trial Schedules

**Entries Close 11 June 2017**

**ALICE SPRINGS KENNEL & DOG SPORTS CLUB  
2 X Championship Dog Shows (DOUBLE HEADER)  
Saturday 8th July 2017**

<b>Judge:</b>	<b>SHOW #400</b> – Ms Kaye McGhie (Qld) <b>SHOW #401</b> – Ms Anne Collyer (Vic)
<b>Judging Commences:</b>	<b>BOTH SHOWS START</b> - 0900hrs
<b>Classes:</b>	<b>BOTH SHOWS</b> - 1, 2, 3, 4, 5, 9, 10, 11, 18, Dogs and Bitches
<b>Special Classes:</b>	At conclusion of Show 401# Parade of Champions (Supreme only)
<b>Order of Judging:</b>	<b>SHOW #400</b> - 2, 3, 4, 5, 6, 7, 1, General Specials ASK&DSC Reserves the right to change the judging order if required <b>SHOW #401</b> - 5, 6, 7, 1, 2, 3, 4, General Specials, Parade of Champions ASK&DSC Reserves the right to change the judging order if required
<b>Club Competition:</b>	Yes <b>Catering:</b> Yes
<b>Entry Fees:</b>	<b>Members:</b> 1st to 5th entries \$16.00 (includes Levy), \$12 subsequent entries, no dog to be entered in more than one ordinary class <b>Non-members:</b> 1st to 5th entries \$19.00 (includes Levy), \$15.00 subsequent entries, no dog to be entered in more than one ordinary class
<b>Catalogues:</b>	\$15 for bound 6 show combined catalogue to be paid with entry
<b>Trophies:</b>	Prize/Sash - BIS, RUIS, All Classes In Show (Both Shows) Prize/Sash - BIG & RUIG. Ribbons - Classes In Group (Both Shows)
<b>Exhibition Manager:</b>	<b>BOTH SHOWS</b> – Bob Whitehead – (AH) 0407 713 026 (no calls after 9pm please) alicespringskennelclubinc@yahoo.com.au
<b>Entries To:</b>	ASK&DSC PO Box 4288 ALICE SPRINGS NT 0871 <b>Online Entries Preferred</b> www.showmanager.com.au Please include email address on entry forms so exhibitors can be informed that entries have been received
<b>Direct Deposit and Internet Banking:</b>	Bank: Westpac    Account Name: Alice Springs Kennel Club BSB 035-303    Account 100527 Please include exhibitors name as reference on internet banking transfer.
<b>Notes:</b>	If camping on the grounds please ensure it has been arranged with, and paid to, Blatherskite Park prior to arrival.  <b>There will be a roast meat &amp; cold buffet for sale on Saturday Night at \$15 a plate (with beverage) which can be prepaid with entry fees.</b>  DUE TO CHANGES IN DELIVERY TIMES OF AUSTRALIA POST, PLEASE ENSURE ENOUGH TIME FOR POSTED ENTRIES TO REACH ALICE SPRINGS  Canteen available and license after midday.



## Show and Trial Schedules

Entries Close 11 June 2017	
<b>ALICE SPRINGS KENNEL &amp; DOG SPORTS CLUB</b> <b>2 X Championship Dog Shows (DOUBLE HEADER)</b> <b>Sunday 9th July 2017</b>	
<b>Judge:</b>	<b>SHOW #402</b> – Mr Wayne Burton (NSW) <b>SHOW #403</b> – Ms Meredith Clegg (Vic)
<b>Judging Commences:</b>	<b>BOTH SHOWS START</b> - 0900hrs
<b>Classes:</b>	<b>BOTH SHOWS</b> - 1, 2, 3, 4, 5, 9, 10, 11, 18, Dogs and Bitches
<b>Special Classes:</b>	<b>SHOW #403</b> – Irish Brace
<b>Order of Judging:</b>	<b>SHOW # 402</b> - 3, 4, 5, 6, 7, 1, 2, General Specials ASK&DSC Reserves the right to change the judging order if required <b>SHOW #403</b> - 7, 1, 2, 3, 4, 5, 6, General Specials, Irish Brace ASK&DSC Reserves the right to change the judging order if required
<b>Club Competition:</b>	Yes <b>Catering:</b> Yes
<b>Entry Fees:</b>	<b>Members:</b> 1st to 5th entries \$16.00 (includes Levy), \$12 subsequent entries, no dog to be entered in more than one ordinary class <b>Non-members:</b> 1st to 5th entries \$19.00 (includes Levy), \$15.00 subsequent entries, no dog to be entered in more than one ordinary class
<b>Catalogues:</b>	\$15 for bound 6 show combined catalogue to be paid with entry
<b>Trophies:</b>	Prize/Sash - BIS, RUIS, All Classes In Show (Both Shows) Prize/Sash - BIG & RUIG. Ribbons - Classes In Group (Both Shows)
<b>Exhibition Manager:</b>	<b>BOTH SHOWS</b> – Bob Whitehead – (AH) 0407 713 026 (no calls after 9pm please) alicespringskennelclubinc@yahoo.com.au
<b>Entries To:</b>	ASK&DSC PO Box 4288 ALICE SPRINGS NT 0871 <b>Online Entries Preferred</b> www.showmanager.com.au Please include email address on entry forms so exhibitors can be informed that entries have been received
<b>Direct Deposit and Internet Banking:</b>	Bank: Westpac    Account Name: Alice Springs Kennel Club BSB 035-303    Account 100527 Please include exhibitors name as reference on internet banking transfer.
<b>Notes:</b>	If camping on the grounds please ensure it has been arranged with, and paid to, Blatherskite Park prior to arrival.  <b>There will be a roast meat &amp; cold buffet for sale on Saturday Night at \$15 a plate (with beverage) which can be prepaid with entry fees.</b>  DUE TO CHANGES IN DELIVERY TIMES OF AUSTRALIA POST, PLEASE ENSURE ENOUGH TIME FOR POSTED ENTRIES TO REACH ALICE SPRINGS  Canteen available and license after midday.



## Show and Trial Schedules

**Entries Close 11 June 2017**

### TENNANT CREEK & DISTRICT SHOW SOCIETY

2 x Championship Dog Shows

### GAIL & IAN TAYLOR MEMORIAL SHOWS

Show 1 - Friday 14th July 2017 – Jubilee Park, Tennant Creek, NT

Show 2 - Saturday 15th July 2017 – Jubilee Park, Tennant Creek, NT

<b>Judges:</b>	<b>SHOW #1</b> – Mrs Sue Bownds (NSW) <b>SHOW #2</b> – Mrs Annette Bowe (NSW)
<b>Judging Commences:</b>	<b>BOTH SHOWS START</b> – 0900 hrs
<b>Classes:</b>	<b>BOTH SHOWS</b> - 1, 2, 3, 4, 5, 9, 10, 11, 18, Dogs and Bitches
<b>Special Classes:</b>	At conclusion of Show 1 - Junior Handlers
<b>Order of Judging:</b>	<b>SHOW # 1</b> - 2, 3, 4, 5, 6, 7, 1, General Specials, Junior Handlers TC&DSS Reserves the right to change the judging order if required <b>SHOW #2</b> - 5, 6, 7, 1, 2, 3, 4, General Specials TC&DSS Reserves the right to change the judging order if required
<b>Club Competition:</b>	No <b>Catering:</b> Yes (Show 1 only)
<b>Entry Fees:</b>	<b>Members:</b> 1st to 5th entries \$17.00 (includes Levy), \$12 subsequent entries, no dog to be entered in more than one ordinary class <b>Non-members:</b> not applicable <b>Special Classes</b> Gold coin donation on the day
<b>Catalogues:</b>	\$5 to be paid with entry
<b>Trophies:</b>	Prize/Sash - BIS, RUIS, All Classes In Show (Both Shows) Prize/Sash - BIG & RUIG. Ribbons - Classes In Group (Both Shows)
<b>Exhibition Manager:</b>	<b>BOTH SHOWS</b> – Bob Whitehead – (AH) 0407 713 026 (no calls after 9pm please)
<b>ALL Entries To:</b>	TC&DSS PO Box 515 TENNANT CREEK NT 0872 Online Entries Preferred www.showmanager.com.au
<b>Direct Deposit and Internet Banking:</b>	Account Name: Tennant Creek & District Show Society BSB 015-889 Account 4104-47729 Please include exhibitors name as reference on internet banking transfer. Please include email address on entry forms so exhibitors can be informed that entries have been received.
<b>Notes:</b>	Camping available on site (Limited facilities & sites) at \$5.00 a night <b>There will be a BBQ for sale on Friday &amp; Saturday Night at \$10 a plate which can be prepaid with entry fees.</b> Dog friendly accommodation available at Bluestone Motor Inn 08 89622167, Safari Lodge Motel 08 89622325, Tennant Creek Caravan Park 08 89622325 and Outback Caravan Park 08 89622459.



## Show and Trial Schedules

<b>Entries Close 1 July 2017</b>	
<b>SHOW DOG HANDLERS CLUB</b>	
<b>2 X Championship Shows (DOUBLE HEADER)</b>	
<b>Saturday 22nd July 2017, Winnellie Dog Area</b>	
<b>Judge:</b>	<b>SHOW #1</b> - Mr James Camac (V) <b>SHOW #2</b> - Ms Carol Gunn (Q)
<b>Judging Commences:</b>	<b>BOTH SHOWS START</b> - 5.30 pm
<b>Classes:</b>	<b>BOTH SHOWS</b> - 1, 2, 3, 4, 5, 9, 10, 11, 18, Dogs and Bitches
<b>Special Classes:</b>	<b>BOTH SHOWS</b> - Veteran Sweepstakes
<b>Order of Judging:</b>	<b>SHOW # 1</b> - Veterans Sweepstakes 3, 4, 5, 6, 7, 1, 2 General Specials. SDHC Reserves the right to change the judging order if required <b>SHOW #2</b> - 5, 6, 7, 1, 2, 3, 4, Veteran Sweepstakes, General Specials. SDHC Reserves the right to change the judging order if required
<b>Club Competition:</b>	No <b>Catering:</b> Yes
<b>Entry Fees:</b> <b>(Applicable for BOTH shows)</b>	<b>Members:</b> 1st Entry - \$20.00, 2nd Entry \$15.00, 3rd Entry \$13.00, 4th & 5th entries \$12, (includes Levy) subsequent entries \$6.00. Veteran Sweepstakes \$5.00. Any dog entered in two or more classes \$25.00 for second and subsequent classes. <b>Non-members:</b> 1st Entry - \$22.00, 2nd Entry \$18.00, 3rd Entry \$16.00, 4th & 5th entries \$14, (includes Levy) subsequent entries \$13.00. Veteran Sweepstakes \$5.00. Any dog entered in two or more classes \$25.00 for second and subsequent classes.
<b>Catalogues:</b>	Included with first entry (1 x Cat per show)
<b>Trophies:</b>	Prize/Sash - BIS, RUIS, All Classes In Show (Both Shows) Prize/Sash - BIG & RUIG. Ribbons - Classes In Group (Both Shows)
<b>Exhibition Manager:</b>	<b>SHOW #1</b> - Marlene Watt – 89 882125/0419189883 (no calls after 8pm please) <b>SHOW #2</b> - Amie White - 0409142689
<b>Entries To:</b>	SDHC Treasurer PO Box 569 HUMPTY DOO NT 0836 Online Entries Preferred www.showmanager.com.au
<b>Direct Deposit and Internet Banking:</b>	Peoples Choice Credit Union Account Name: Show Dog Handlers Club BSB: 805 050                      A/C 62398228 Your EFT banking receipt must be sent with any postal entries or the entries may not be accepted.
<b>Notes:</b>	Membership: \$12 Double, \$10 Single – Financial year 1 Oct to 30 Sep.



## Show and Trial Schedules

**Entries Close 16 June 2017**



**ROYAL AGRICULTURAL SOCIETY OF THE NT**  
**Championship Show**  
**27th-29th July 2017**  
**Darwin Showgrounds And Exhibition Centre**  
**Shean Road Winnellie**



<b>Judge:</b>	Mr Adrian Jones (Tasmania)
<b>Judging Commences:</b>	Thursday 27 July at 7.00pm Friday 28 July at 4.00pm Saturday 29 July at 4.00pm
<b>Classes:</b>	1, 2, 3, 4, 5, 9, 10, 11, 18 - dogs and bitches
<b>Order of Judging:</b>	The RASNT reserves the right to change the order of Judging and/or start time depending on the number of entries. Thursday 27 July - Groups 1 and 6 (Toys and Utility) Friday 28 July - Groups 7, 5 and 2 (Non Sporting, Working Dogs and Terriers) Saturday 29 July - Groups 3 and 4 (Gundogs and Hounds) Followed by General Specials
<b>Ring Steward:</b>	Mr Melville Hammett
<b>Catering:</b>	Yes
<b>Entry Fees:</b>	<b>Members:</b> 1st Entry - \$12.00 entries 1 to 5 (includes Levy), 6th and subsequent entries \$10.00 <b>Non-members:</b> 1st Entry - \$32.00 entries 1 to 5 (includes Levy), Subsequent entries \$30.00
<b>Catalogues:</b>	\$4.00 to be paid with entry
<b>Trophies:</b>	As per catalogue and official Show Schedule
<b>Special Prizes:</b> (refer NACA rule 3.19)	WIMBO Trophy as per catalogue
<b>Exhibition Manager:</b>	Ms Susie Ripper - 0410 916 111 (not after 8pm please) or email twochai@hotmail.com
<b>Entries To:</b>	The Secretary, RASNT, PO Box 39600 WINNELLIE NT 0821

Details available online at: <http://royal.k9territory.com>

NOTE: Non Members entry fee includes ONE gate pass per exhibitor for each day their dog or dogs are exhibited. Winners required for General Specials may receive one Collect Pass from the Show Manager. Extra Gate Passes may be purchased with entries.

GATE FEES: Adult \$20.00, Child U14 \$12.00, Child U5 Free, Aged Pensioner \$12.00, Family (2 adults + 3 children U14) Pass \$50.00

MEMBERSHIP: Ordinary (Member + Guest) \$65.00, Junior 14 years and under 17 years \$22.00, Aged Pensioner \$25.00, Sub Junior (under 14 years) \$10.00. To become a Member you must complete the Membership Application Form available from the RASNT, NACA, the Official Show Schedule or from the Show Manager.

All entries to be made on an official ANKC entry form and an RASNT entry form available for download from <http://www.darwinshow.com.au> OR from the DogsNT or RASNT offices. Memberships and entry passes will be mailed two (2) weeks before the event. For people travelling to the event please ensure both membership and Section G forms are clearly marked "HOLD for collection". Numbers will be picked up on the day from the official tables.

## Show and Trial Schedules

Entries Close 16 June 2017



**ROYAL AGRICULTURAL SOCIETY OF THE NT**  
**Obedience, Rally O And Agility Trials**  
**27th-29th July 2017**



**Darwin Showgrounds And Exhibition Centre, Shean Road Winnellie**

<b>Judge:</b>	Mrs Maria Wheeler (New South Wales) - Obedience And Rally O Ms Chavonne Carroll (Northern Territory) - Jumping Ms Sarah Baker (Northern Territory) - Agility
<b>Check in/Vetting:</b>	Thursday 27 July 5.30pm to 5.45pm for Rally O Friday 28 July 4.30pm to 4.45pm for Jumping and approximately 6.30pm to 6.45pm for Obedience Saturday 29 July 4.30pm to 4.45pm for Agility Bitches in oestrus are not permitted in the precincts of a trial Vetting for entire bitches only
<b>Judging Commences:</b>	Thursday 27 July at 6.00pm - Rally O Friday 28 July at 5.00pm - Jumping Friday 28 July - after completion of Jumping - Obedience Saturday 29 July at 5.00pm - Agility
<b>Classes:</b>	Obedience: Utility Excellent, Utility, Open, Novice, Community Companion Dog Rally O: Novice, Advanced A & B, Excellent A & B, Masters Agility and Jumping: Novice, Excellent, Open, Masters
<b>Special Classes:</b>	Best of Winners Obedience plus Echo & Midi Trophy
<b>Order of Judging:</b>	The RASNT reserves the right to change the order of Judging and/or start time depending on the number of entries.
<b>Catering:</b>	Yes
<b>Catalogues:</b>	\$4.00 to be paid with entry
<b>Trophies:</b>	As per catalogue and official Show Schedule
<b>Special Prizes:</b>	WIMBO Trophy as per catalogue.
(refer NACA rule 3.19)	ECHO & MIDI Trophy as per catalogue
<b>Exhibition Manager:</b>	Obedience - Klayton Robb - 0428 627 329 Rally O - Chavonne Carroll - 0412 116 987 Agility, including Jumping - Sue Dwyer - sue@aest.biz or 0428 627 329
<b>Entries To:</b>	The Secretary, RASNT, PO Box 39600 WINNELLIE NT 0821

Details available online at: <http://royal.k9territory.com>

**NOTE:** Non Members entry fee includes ONE gate pass per exhibitor for each day their dog or dogs are exhibited. Extra Gate Passes may be purchased with entries.

**GATE FEES:** Adult \$20.00, Child U14 \$12.00, Child U5 Free, Aged Pensioner \$12.00, Family (2 adults + 3 children U14) Pass \$50.00

**MEMBERSHIP:** Ordinary (Member + Guest) \$65.00, Junior 14 years and under 17 years \$22.00, Aged Pensioner \$25.00, Sub Junior (under 14 years) \$10.00. To become a Member you must complete the Membership Application Form available from the RASNT, NACA, the Official Show Schedule or from the Show Manager.

All entries to be made on an official ANKC entry form and an RASNT entry form available for download from <http://www.darwinshow.com.au> OR from the DogsNT or RASNT offices. Memberships and entry passes will be mailed two (2) weeks before the event. For people travelling to the event please ensure both membership and Section G forms are clearly marked "HOLD for collection". Numbers will be picked up on the day from the official tables.

**ENTRY FEES:**

**OBEDIENCE TRIAL:** MEMBERS - \$12.00 Entries 1 to 5 (includes NACA levy), subsequent entries \$10.00

NON MEMBERS - \$32.00 Entries 1 to 5 (includes NACA levy), subsequent entries \$30.00

**RALLY O TRIAL:** MEMBERS - \$12.00 Entries 1 to 5 (includes NACA levy), subsequent entries \$10.00

NON MEMBERS - \$32.00 Entries 1 to 5 (includes NACA levy), subsequent entries \$30.00

**AGILITY TRIAL (including JUMPING):** MEMBERS - \$12.00 Entries 1 to 5 (includes NACA levy), subsequent entries \$10.00

NON MEMBERS - \$32.00 Entries 1 to 5 (includes NACA levy), subsequent entries \$20.00

## Show and Trial Schedules

<b>Entries Close 8 July 2017 (BOTH Trials)</b>	
<b>PALMERSTON GUNDOG CLUB (2x JULY TRIALS)</b>	
<b>Retrieving Trial [Non-Slip]</b>	
<b>Retrieving Ability Test</b>	
<b>Saturday 29th July &amp; Sunday 30th July 2017</b>	
<b>Judge:</b>	Mr Tom Rees (NT)
<b>Judging Commences:</b>	<b>Retrieving Trial [Non-Slip]</b> - 29th July 2017 - 8.00am <b>Retrieving Ability Test</b> - 30th July 2017 - 8.00am
<b>Venue:</b>	Please contact the Trial Manager before the Trial dates for directions. <b>NB:</b> Please bring refreshments, insect repellent, chairs, hats & sunscreen for handlers, dogs & spectators as the Trial sites can be out bush.
<b>Classes:</b>	<b>Retrieving Trial [Non-Slip]</b> - Beginners, Novice, Restricted <b>Retrieving Ability Test</b> - Novice, Open
<b>Order of Judging:</b>	<b>Retrieving Trial [Non-Slip]</b> - Beginners, Novice, Restricted <b>Retrieving Ability Test</b> - Novice, Open PGC Reserves the right to change the judging order if required
<b>Club Competition:</b>	Yes <b>Catering:</b> No
<b>Entry Fees:</b>	<b>Members:</b> All entries - \$16 (includes Levy) <b>Non-Members:</b> All entries - \$20 (Inc Levy)
<b>Catalogues:</b>	Included with first entry
<b>Trophies:</b>	<b>Retrieving Trial [Non-Slip]</b> - 1st place in all award stakes, sashes for all place-getters & 1st in Beginners <b>Retrieving Ability Test</b> - Sash & Certificate to All Qualifiers
<b>Exhibition Manager:</b>	Klayton Robb, mob 0414 886 084 or mob 0411 297 692
<b>Entries To:</b>	Trial Manager PO Box 38851 Winnellie NT - 0821 <b>NB:</b> For full Club details & to download Membership form, RATs & RT ANKC rules & much more - please refer to our website: <a href="http://palmerstongundogclub.wixsite.com/palmerstongundogclub">http://palmerstongundogclub.wixsite.com/palmerstongundogclub</a>
<b>Direct Deposit and Internet Banking:</b>	<b>Account Name:</b> Palmerston Gundog Club <b>BSB:</b> 085 949 <b>Account:</b> 79 726 5291 Your EFT banking receipt must be sent with any postal entries or the entries may not be accepted.
<b>Notes:</b>	<b>Membership:</b> Single - \$12.50 & Double - \$15 <b>Financial year:</b> 1st Jan to 31st Dec.



## Show and Trial Schedules

**Entries Close 9 July 2017**

**PALMERSTON GUNDOG CLUB**  
**Specialty Championship Show (GUNDOG BREEDS ONLY)**  
**Sunday 30th July 2017, Winnellie Dog Area**

<b>Judge:</b>	Mrs. Sylvia Meekings (Vic)
<b>Judging Commences:</b>	5.30 pm
<b>Classes:</b>	1, 2, 3, 4, 5, 9, 10, 11, 18 dogs & bitches & Veterans
<b>Property Classes:</b>	Best: Trial (Gundogs need to have competed in any ANKC sanctioned Trial for entry into this class), Gait, Head, Brace & Adult Handlers. <b>Entries For Property Classes Will Also Be Taken On The Night.</b>
<b>Order of Judging:</b>	Gundog breeds alphabetically - followed by General Specials & Property classes. (PGC Reserves the right to change the judging order if required)
<b>Club Competition:</b>	Yes <b>Catering:</b> No
<b>Entry Fees:</b> <b>(Applicable for BOTH shows)</b>	<b>Members:</b> 1st Entry - \$19.00 (includes Levy & Catalogue), 2nd & subsequent - \$14.00 <b>Non-members:</b> 1st Entry - \$21.50 (includes Levy & Catalogue), 2nd & subsequent - \$17.00 <b>Property classes:</b> All Property Classes Inc Brace - \$5 each entry (includes Levy)
<b>Catalogues:</b>	Included with first entry
<b>Trophies:</b>	Trophies & Sash: Best in Show, Runner Up In Show & Classes in Show. Prizes: Best of Breed & Property Classes.
<b>Exhibition Manager:</b>	Mrs. Merrilyn Robb: (08) 89886084 (ah) or mob: 0411 297 692
<b>Entries To:</b>	Show Manager PO Box 38851 Winnellie, NT - 0821
<b>Direct Deposit and Internet Banking:</b>	Account Name: Palmerston Gundog Club BSB: 085 949      Account: 79 726 5291 NB: Receipt for internet banking must be included otherwise it will be treated as a donation & entries may not be accepted.
<b>Notes:</b>	Please bring a plate (meat, drinks & a salad etc) for the table as an informal BBQ with the judge follows immediately after the ring has been cleared. All visitors & members most welcome to attend.  <b>Membership:</b> Single - \$12.50 & Double - \$15 <b>Financial year:</b> 1st Jan to 31st Dec.

## Show and Trial Schedules

Paper Entries Close 7 July 2017 – Online Entries Close 14 July 2017

**CANINE EXPO  
CHAMPIONSHIP SHOW ONE  
Friday 4th – Sunday 6th August 2017  
Winnellie Dog Showgrounds, Shean Rd, Winnellie**

<b>Judge:</b>	Mr Andrew Burt (Victoria)
<b>Judging Commences:</b>	Friday 4 August at 6.00pm, Saturday 5 August at 5.00pm Sunday 6 August – 4:30 Junior Handlers – General Specials Show 1 not before 5pm
<b>Classes:</b>	1, 2, 3, 4, 5, 9, 10, 11, 18, Dogs and Bitches
<b>Special Classes:</b>	VETERANS 7 years & over, VETERANS 10 years and over
<b>Order of Judging:</b>	Canine Expo reserves the right to change the order of judging and/or start time depending on the number of entries. Friday 4 August (Hounds, Non Sporting & Terriers) Saturday 5 August (Working Dogs, Utility, Gundogs & Toys) Sunday 6 August–Junior Handlers 4:30 General Specials Show 1 not before 5pm
<b>Ring Steward:</b>	Ms Susie Ripper
<b>Club Competition:</b>	No <b>Catering:</b> Yes
<b>Entry Fees: (Applicable for BOTH shows)</b>	<b>Members:</b> 1st Entry - \$20.00, 2nd & 3rd Entry \$15.00, 4th & 5th entry \$10.00 subsequent entries \$5.00 each. (Entry costs for entries 1– 5 include Dogs NT levy) <b>Non-members:</b> 1st Entry - \$25.00, 2nd & 3rd Entry \$20.00, 4th & 5th entries \$15.00 subsequent entries \$10.00 each. (Entry costs for entries 1– 5 include Dogs NT levy) <b>Special classes:</b> Exhibits entered in Baby Puppy or Veteran's Classes is \$10.00 per entry (includes Dogs NT Levy).
<b>Catalogue:</b>	Complimentary
<b>Trophies:</b>	BIS, RUIS & All Classes In Show - Trophy & Ribbon BIG & RUIG – Trophy & Ribbon Classes In Group – Ribbon Canine Expo acknowledges BLACK HAWK as a show sponsor
<b>Exhibition Manager:</b>	Emma Carter – 0413445240 or Carol Smith – 0400496983 (not after 8pm please)
<b>Entries To:</b>	Exhibition Manager PO Box 36137 WINNELLIE NT 0821 ONLINE ENTRIES PREFERRED AND ARE AVAILABLE FOR OUR SHOWS through Show Manager
<b>Direct Deposit and Internet Banking:</b>	Bendigo Bank BSB: 633-000 Account Number: 154937999 Account Name : Canine Expo <b>Please include your EFT banking receipt &amp; membership form if you are going to become a Club member.</b>
<b>Notes:</b>	CANINE EXPO is pleased to announce Yvonne Van der Horst will be the Official photographer for our event.  <b>MEMBERSHIP:</b> Membership year : 1 Jul to 30 Jun Membership: \$15 Double, \$10 Single, \$5 Junior A membership form can be downloaded at: <a href="http://canineexpo.dogsites.com.au/">http://canineexpo.dogsites.com.au/</a>  Please assist the committee by taking the time to check that the details on your entry/s are correct. Additionally for paper entries that you have signed the entry and the details on it can be read clearly.  <b>If you are unsure in regards to calculating your entry fees please call one of the Show Managers to discuss prior to entering.</b>



## Show and Trial Schedules

Paper Entries Close 7 July 2017 – Online Entries Close 14 July 2017

**CANINE EXPO  
CHAMPIONSHIP SHOW TWO  
Friday 4th – Sunday 6th August 2017  
Winnellie Dog Showgrounds, Shean Rd, Winnellie**

<b>Judge:</b>	Mrs Pamela Bruce (Canada)
<b>Judging Commences:</b>	Friday 4 August at 6.00pm, Saturday 5 August at 5.00pm Sunday 6 August -General Specials after completion of SHOW 1 GS Judging
<b>Classes:</b>	1, 2, 3, 4, 5, 9, 10, 11, 18, Dogs and Bitches
<b>Special Classes:</b>	VETERANS 7 years & over, VETERANS 10 years and over
<b>Order of Judging:</b>	Canine Expo reserves the right to change the order of judging and/or start time depending on the number of entries. Friday 4 August (Gundogs, Hounds & Non Sporting) Saturday 5 August (Terriers, Toys, Working Dogs & Utility) Sunday 6 August– General Specials after completion of SHOW 1 GS Judging
<b>Ring Steward:</b>	Ms Kaye Forrester
<b>Club Competition:</b>	No <b>Catering:</b> Yes
<b>Entry Fees: (Applicable for BOTH shows)</b>	<b>Members:</b> 1st Entry - \$20.00, 2nd & 3rd Entry \$15.00, 4th & 5th entry \$10.00 subsequent entries \$5.00 each. (Entry costs for entries 1– 5 include Dogs NT levy) <b>Non-members:</b> 1st Entry - \$25.00, 2nd & 3rd Entry \$20.00, 4th & 5th entries \$15.00 subsequent entries \$10.00 each. (Entry costs for entries 1– 5 include Dogs NT levy) <b>Special classes:</b> Exhibits entered in Baby Puppy or Veteran's Classes is \$10.00 per entry (includes Dogs NT Levy).
<b>Catalogue:</b>	Complimentary
<b>Trophies:</b>	BIS, RUIS & All Classes In Show - Trophy & Ribbon BIG & RUIG – Trophy & Ribbon Classes In Group – Ribbon Canine Expo acknowledges BLACK HAWK as a show sponsor
<b>Exhibition Manager:</b>	Emma Carter – 0413445240 or Carol Smith – 0400496983 (not after 8pm please)
<b>Entries To:</b>	Exhibition Manager PO Box 36137 WINNELLIE NT 0821 ONLINE ENTRIES PREFERRED AND ARE AVAILABLE FOR OUR SHOWS through Show Manager
<b>Direct Deposit and Internet Banking:</b>	Bendigo Bank BSB: 633-000 Account Number: 154937999 Account Name : Canine Expo <b>Please include your EFT banking receipt &amp; membership form if you are going to become a Club member.</b>
<b>Notes:</b>	CANINE EXPO is pleased to announce Yvonne Van der Horst will be the Official photographer for our event.  <b>MEMBERSHIP:</b> Membership year : 1 Jul to 30 Jun Membership: \$15 Double, \$10 Single, \$5 Junior A membership form can be downloaded at: <a href="http://canineexpo.dogsites.com.au/">http://canineexpo.dogsites.com.au/</a>  Please assist the committee by taking the time to check that the details on your entry/s are correct. Additionally for paper entries that you have signed the entry and the details on it can be read clearly.  <b>If you are unsure in regards to calculating your entry fees please call one of the Show Managers to discuss prior to entering.</b>



## Show and Trial Schedules

Paper Entries Close 7 July 2017 – Online Entries Close 14 July 2017

**CANINE EXPO  
CHAMPIONSHIP SHOW THREE  
Friday 4th – Sunday 6th August 2017  
Winnellie Dog Showgrounds, Shean Rd, Winnellie**

<b>Judge:</b>	Mr Angus Wardhana (Indonesia)
<b>Judging Commences:</b>	Friday 4 August at 6.00pm, Saturday 5 August at 5.00pm Sunday 6 August -General Specials after completion of SHOW 2 GS Judging
<b>Classes:</b>	1, 2, 3, 4, 5, 9, 10, 11, 18, Dogs and Bitches
<b>Special Classes:</b>	VETERANS 7 years & over, VETERANS 10 years and over
<b>Order of Judging:</b>	Canine Expo reserves the right to change the order of judging and/or start time depending on the number of entries. Friday 4 August (Working Dogs, Gundogs & Utility) Saturday 5 August (Toys, Terriers, Non Sporting & Hounds) Sunday 6 August– General Specials after completion of SHOW 2 GS Judging
<b>Ring Steward:</b>	Ms Fiona Scott
<b>Club Competition:</b>	No <b>Catering:</b> Yes
<b>Entry Fees: (Applicable for BOTH shows)</b>	<b>Members:</b> 1st Entry - \$20.00, 2nd & 3rd Entry \$15.00, 4th & 5th entry \$10.00 subsequent entries \$5.00 each. (Entry costs for entries 1– 5 include Dogs NT levy) <b>Non-members:</b> 1st Entry - \$25.00, 2nd & 3rd Entry \$20.00, 4th & 5th entries \$15.00 subsequent entries \$10.00 each. (Entry costs for entries 1– 5 include Dogs NT levy) <b>Special classes:</b> Exhibits entered in Baby Puppy or Veteran's Classes is \$10.00 per entry (includes Dogs NT Levy).
<b>Catalogue:</b>	Complimentary
<b>Trophies:</b>	BIS, RUIS & All Classes In Show - Trophy & Ribbon BIG & RUIG – Trophy & Ribbon Classes In Group – Ribbon Canine Expo acknowledges BLACK HAWK as a show sponsor
<b>Exhibition Manager:</b>	Emma Carter – 0413445240 or Carol Smith – 0400496983 (not after 8pm please)
<b>Entries To:</b>	Exhibition Manager PO Box 36137 WINNELLIE NT 0821 ONLINE ENTRIES PREFERRED AND ARE AVAILABLE FOR OUR SHOWS through Show Manager
<b>Direct Deposit and Internet Banking:</b>	Bendigo Bank BSB: 633-000 Account Number: 154937999 Account Name : Canine Expo <b>Please include your EFT banking receipt &amp; membership form if you are going to become a Club member.</b>
<b>Notes:</b>	CANINE EXPO is pleased to announce Yvonne Van der Horst will be the Official photographer for our event.  <b>MEMBERSHIP:</b> Membership year : 1 Jul to 30 Jun Membership: \$15 Double, \$10 Single, \$5 Junior A membership form can be downloaded at: <a href="http://canineexpo.dogsites.com.au/">http://canineexpo.dogsites.com.au/</a>  Please assist the committee by taking the time to check that the details on your entry/s are correct. Additionally for paper entries that you have signed the entry and the details on it can be read clearly.  <b>If you are unsure in regards to calculating your entry fees please call one of the Show Managers to discuss prior to entering.</b>



## Show and Trial Schedules

Paper Entries Close 7 July 2017 – Online Entries Close 14 July 2017

**CANINE EXPO  
CHAMPIONSHIP SHOW FOUR  
Friday 4th – Sunday 6th August 2017  
Winnellie Dog Showgrounds, Shean Rd, Winnellie**

<b>Judge:</b>	Ms Judy Oliver (Victoria)
<b>Judging Commences:</b>	Friday 4 August at 6.00pm, Saturday 5 August at 5.00pm Sunday 6 August – 4:30 Junior Handlers & General Specials after completion of SHOW 3 GS Judging
<b>Classes:</b>	1, 2, 3, 4, 5, 9, 10, 11, 18, Dogs and Bitches
<b>Special Classes:</b>	VETERANS 7 years & over, VETERANS 10 years and over
<b>Order of Judging:</b>	Canine Expo reserves the right to change the order of judging and/or start time depending on the number of entries. Friday 4 August (Toys, Utility & Terriers) Saturday 5 August (Non Sporting, Hounds, Working Dogs & Gundogs) Sunday 6 August– 4:30 Junior Handlers. General Specials after completion of SHOW 3 GS Judging
<b>Ring Steward:</b>	Ms Deborah Anderson
<b>Club Competition:</b>	No
<b>Catering:</b>	Yes
<b>Entry Fees: (Applicable for BOTH shows)</b>	<b>Members:</b> 1st Entry - \$20.00, 2nd & 3rd Entry \$15.00, 4th & 5th entry \$10.00 subsequent entries \$5.00 each. (Entry costs for entries 1– 5 include Dogs NT levy) <b>Non-members:</b> 1st Entry - \$25.00, 2nd & 3rd Entry \$20.00, 4th & 5th entries \$15.00 subsequent entries \$10.00 each. (Entry costs for entries 1– 5 include Dogs NT levy) <b>Special classes:</b> Exhibits entered in Baby Puppy or Veteran's Classes is \$10.00 per entry (includes Dogs NT Levy).
<b>Catalogue:</b>	Complimentary
<b>Trophies:</b>	BIS, RUIS & All Classes In Show - Trophy & Ribbon BIG & RUIG – Trophy & Ribbon Classes In Group – Ribbon Canine Expo acknowledges BLACK HAWK as a show sponsor
<b>Exhibition Manager:</b>	Emma Carter – 0413445240 or Carol Smith – 0400496983 (not after 8pm please)
<b>Entries To:</b>	Exhibition Manager PO Box 36137 WINNELLIE NT 0821 ONLINE ENTRIES PREFERRED AND ARE AVAILABLE FOR OUR SHOWS through Show Manager
<b>Direct Deposit and Internet Banking:</b>	Bendigo Bank BSB: 633-000 Account Number: 154937999 Account Name : Canine Expo <b>Please include your EFT banking receipt &amp; membership form if you are going to become a Club member.</b>
<b>Notes:</b>	CANINE EXPO is pleased to announce Yvonne Van der Horst will be the Official photographer for our event.  <b>MEMBERSHIP:</b> Membership year : 1 Jul to 30 Jun Membership: \$15 Double, \$10 Single, \$5 Junior A membership form can be downloaded at: <a href="http://canineexpo.dogsites.com.au/">http://canineexpo.dogsites.com.au/</a>  Please assist the committee by taking the time to check that the details on your entry/s are correct. Additionally for paper entries that you have signed the entry and the details on it can be read clearly.  <b>If you are unsure in regards to calculating your entry fees please call one of the Show Managers to discuss prior to entering.</b>



## Show and Trial Schedules

Paper Entries Close 7 July 2017 – Online Entries Close 14 July 2017

**CANINE EXPO  
CHAMPIONSHIP SHOW FIVE  
Friday 4th – Sunday 6th August 2017**

**Winnellie Dog Showgrounds, Shean Rd, Winnellie**

<b>Judge:</b>	Mr Attila Czegledi (Hungary)
<b>Judging Commences:</b>	Friday 4 August at 6.00pm, Saturday 5 August at 5.00pm Sunday 6 August -General Specials after completion of SHOW 4 GS Judging
<b>Classes:</b>	1, 2, 3, 4, 5, 9, 10, 11, 18, Dogs and Bitches
<b>Special Classes:</b>	VETERANS 7 years & over, VETERANS 10 years and over
<b>Order of Judging:</b>	Canine Expo reserves the right to change the order of judging and/or start time depending on the number of entries. Friday 4 August (Terriers, Working Dogs & Toys) Saturday 5 August (Utility, Gundogs, Non Sporting & Hounds) Sunday 6 August– After completion of SHOW 4 General Specials Judging
<b>Ring Steward:</b>	Deb Anderson
<b>Club Competition:</b>	No <b>Catering:</b> Yes
<b>Entry Fees: (Applicable for BOTH shows)</b>	<b>Members:</b> 1st Entry - \$20.00, 2nd & 3rd Entry \$15.00, 4th & 5th entry \$10.00 subsequent entries \$5.00 each. (Entry costs for entries 1– 5 include Dogs NT levy) <b>Non-members:</b> 1st Entry - \$25.00, 2nd & 3rd Entry \$20.00, 4th & 5th entries \$15.00 subsequent entries \$10.00 each. (Entry costs for entries 1– 5 include Dogs NT levy) <b>Special classes:</b> Exhibits entered in Baby Puppy or Veteran's Classes is \$10.00 per entry (includes Dogs NT Levy).
<b>Catalogue:</b>	Complimentary
<b>Trophies:</b>	BIS, RUIS & All Classes In Show - Cash & Ribbon BIG & RUIG – Cash & Ribbon Classes In Group – Ribbon Canine Expo acknowledges BLACK HAWK as a show sponsor
<b>Exhibition Manager:</b>	Emma Carter – 0413445240 or Carol Smith – 0400496983 (not after 8pm please)
<b>Entries To:</b>	Exhibition Manager PO Box 36137 WINNELLIE NT 0821 ONLINE ENTRIES PREFERRED AND ARE AVAILABLE FOR OUR SHOWS through Show Manager
<b>Direct Deposit and Internet Banking:</b>	Bendigo Bank BSB: 633-000 Account Number: 154937999 Account Name : Canine Expo <b>Please include your EFT banking receipt &amp; membership form if you are going to become a Club member.</b>
<b>Notes:</b>	CANINE EXPO is pleased to announce Yvonne Van der Horst will be the Official photographer for our event.  <b>MEMBERSHIP:</b> Membership year : 1 Jul to 30 Jun Membership: \$15 Double, \$10 Single, \$5 Junior A membership form can be downloaded at: <a href="http://canineexpo.dogsites.com.au/">http://canineexpo.dogsites.com.au/</a>  Please assist the committee by taking the time to check that the details on your entry/s are correct. Additionally for paper entries that you have signed the entry and the details on it can be read clearly.  <b>If you are unsure in regards to calculating your entry fees please call one of the Show Managers to discuss prior to entering.</b>



## Show and Trial Schedules

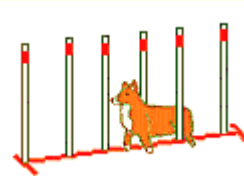


**FRED'S PASS POSITIVE DOG TRAINING CLUB INC.**  
 Will host the following trials in August / Sept 2017



### AUGUST 2017

**Friday 11th August** Agility Jumping All Classes  
**Sat 12th August** Agility Jumping All Classes  
**Judge:** **Ms Vanessa Dowsen NSW**  
**Judging Commences** Friday at 7pm Saturday 6.30pm  
**Entries close:** **28th July 2017**



**Friday 25th August** Agility Jumping All Classes  
**Sat 26th August** Agility Jumping All Classes  
**Judge:** **Ms Annette Gniel QLD**  
**Judging Commences** Friday at 7pm Saturday 6.30pm  
**Entries close:** **18th August 2017**



### SEPTEMBER 2017

**Friday 8th September** UDX UD CDX CD CCD Rally O  
**Sat 9th September** Agility Jumping All Classes  
**Judges:**  
**Friday:** **Mr Klayton Robb** CCD CD  
**Mrs Sue Dwyer** UDX UD CDX  
**Ms Chavonne Carroll** RM  
**Sue Dwyer** RN RA RE  
**Saturday:** **TBA**  
**Judging Commences** Friday at 7pm Saturday 6.30pm  
**Entries close:** **18th August 2017**



#### Entry Fees

##### Members:

**Obedience:** \$11.00 first entry includes DogsNT levy, \$11.00 additional  
**Rally O:** \$11.00 first entry includes DogsNT levy, \$11.00 additional  
**Agility Jumping Games:** \$11.00 first entry includes DogsNT levy, \$11.00 additional

##### Non Members:

**Obedience Rally O Agility and Jumping:**  
 \$15.00 each entry includes DogsNT Levy

##### Catalogue:

Free if emailed, \$1 for hardcopy to be paid with entry.

**Not for Competitions:** \$2:00

**Postal Entries:** PO Box 1167 Palmerston 0831

Please refer to [www.fppdt.org.au](http://www.fppdt.org.au) or contact the club on [training@fppdt.org.au](mailto:training@fppdt.org.au) for full schedule  
 Or Call Sue 0428627329

**Judging Order as per Catalogue.**

## Show and Trial Schedules

Entries Close Friday 28th July 2017  
Electronic entries close 4th August 2017

*Darwin Obedience Dog Club Inc*  
*312th & 313th Obedience Trial*  
*13th Rally Obedience Trial*  
*and*  
*163rd & 164th Agility Trial*

18th – 20th August 2017

JUDGE:

Heather Diamond (VIC)

**Classes:**

**18th August 2017**  
**Friday:** **Obedience** – UDX, UD, CDX, CD, CCD  
**Rally Obedience** – RN, RA-A, RA-B, RE-A, RE-B, RM  
[Obedience followed by Rally Obedience]  
**Check In: 6.45pm - Start 7pm**

**19th August 2017**  
**Saturday:** **Obedience** – UDX, UD, CCD, CD, CDX  
**Agility** – Open, Master, Excellent, Novice  
**Jumping** – Open, Master, Excellent, Novice  
[Obedience followed by Agility and Jumping]  
**Check In: 5.45pm - Start 6pm**

**20th August 2017**  
**Sunday:** **Agility** – Novice, Excellent, Master, Open  
**Jumping** – Novice, Excellent, Master, Open  
[Agility followed by Jumping]  
**Check In: 5.45pm - Start 6pm**

**Entry Fees each Discipline - Obedience, Agility, Rally O**

**Members:** \$11.00 per Classes (includes Levy);  
**Non-Members:** \$15 per Classes (includes Levy);

**Catalogues:** \$1 hard copy (Paid with entry) or Free if emailed

**Catering:** TBA

**Prizes:** Trophy - 1st Qualifier in each class  
Sash & Certificate to All Qualifiers  
**Members Competitions**

**Electronic Entries:** [www.dodc.org.au](http://www.dodc.org.au)

**Entries:** Trial Manager  
Darwin Obedience Dog Club Inc  
PO Box 37938  
Winnellie NT 0821

**Enquiries:** Email: [trialmanager@mrjj.net](mailto:trialmanager@mrjj.net)

Pursuant to NACA Rule 3.5.3(c) Exhibitors and dogs participating at an exhibition do so at their own risk



## Show and Trial Schedules


### Entries Close 6 August 2017

**ALICE SPRINGS KENNEL & DOG SPORTS CLUB**  
**3 X Championship Dog Shows (TRIPLE HEADER)**  
**Saturday 26th August 2017 - Blatherskite Park, Alice Springs, NT**

<b>Judge:</b>	<b>SHOW #404</b> – Dr Vicki Knopke (Qld) <b>SHOW #405</b> – Mrs Catherine Scotton (Vic) (TBC) <b>SHOW #406</b> – Mr Max Winch (Vic)
<b>Judging Commences:</b>	<b>SHOWS #404 &amp; #405:</b> START – 1730 hrs <b>SHOW #406:</b> START - 2130 hrs
<b>Classes:</b>	<b>ALL SHOWS:</b> 1, 2, 3, 4, 5, 9, 10, 11, 18, Dogs and Bitches
<b>Order of Judging:</b>	<b>SHOW # 404</b> - 4, 5, 6, 7, 1, 2, 3 General Specials <b>SHOW # 405</b> - 1, 2, 3, 4, 5, 6, 7 General Specials <b>SHOW # 406</b> - 5, 6, 7, 1, 2, 3, 4 General Specials ASK&DSC Reserves the right to change the judging order if required
<b>Club Competition:</b>	Yes <b>Catering:</b> Yes
<b>Entry Fees:</b> (Applicable for BOTH shows)	<b>Members:</b> 1st to 5th entries \$16.00 (includes Levy), \$12 subsequent entries, no dog to be entered in more than one ordinary class \$12 subsequent entries \$9.00 <b>Non-members:</b> 1st to 5th entries \$19.00 (includes Levy), \$15.00 subsequent entries, no dog to be entered in more than one ordinary class
<b>Catalogues:</b>	\$10 for 3 show combined catalogue to be paid with entry
<b>Trophies:</b>	Prize/Sash - BIS, RUIS, All Classes In Show (Both Shows) Prize/Sash - BIG & RUIG. Ribbons - Classes In Group (Both Shows)
<b>Exhibition Manager:</b>	<b>BOTH SHOWS</b> – Bob Whitehead – (AH) 0407 713 026 (no calls after 9pm please) alicespringskennelclubinc@yahoo.com.au
<b>Entries To:</b>	ASK&DSC PO Box 4288 ALICE SPRINGS NT 0871 <b>Online Entries Preferred</b> www.showmanager.com.au Please include email address on entry forms so exhibitors can be informed that entries have been received.
<b>Direct Deposit and Internet Banking:</b>	Bank: Westpac Account Name: Alice Springs Kennel Club BSB 035-303      Account 100527 Please include exhibitors name as reference on internet banking transfer.
<b>Notes:</b>	If camping on the grounds please ensure it has been arranged with, and paid to, Blatherskite Park prior to arrival  <b>There will be a cold meat &amp; buffet for sale on Saturday Night at \$15 a plate (with beverage) which can be prepaid with entry fees.</b> DUE TO CHANGES IN DELIVERY TIMES OF AUSTRALIA POST, PLEASE ENSURE ENOUGH TIME FOR POSTED ENTRIES TO REACH ALICE SPRINGS Canteen available and license after midday.



## Show and Trial Schedules

<b>Entries Close 12 August 2017</b>	
<b>SHOW DOG HANDLERS CLUB</b>	
<b>2 X Championship Shows (DOUBLE HEADER)</b>	
<b>2nd September 2017 – Winnellie Dog Area</b>	
<b>Judge:</b>	<b>SHOW #1:</b> Mr Kerry A Lee (V) <b>SHOW #2:</b> Mrs Jodie Wilshier (Q)
<b>Judging Commences:</b>	<b>SHOW #1:</b> 5:30pm <b>SHOW #2:</b> 6.00pm
<b>Classes:</b>	1, 2, 3, 4, 5, 9, 10, 11, 18, Dogs and Bitches
<b>Special Classes:</b>	<b>BOTH SHOWS:</b> Veteran sweepstakes
<b>Order of Judging:</b>	<b>SHOW 1:</b> Veteran sweepstakes, 3, 4, 5, 6, 7, 1, 2 - General Specials. <b>SHOW 2:</b> 5, 6, 7, 1, 2, 3, 4, Veteran Sweepstakes - General Specials. SDHC reserves the right to change the judging order if required
<b>Club Competition:</b>	<b>No</b> <b>Catering:</b> <b>Yes</b>
<b>Entry Fees (BOTH shows) :</b>	<b>Members:</b> 1st Entry - \$20.00 (incl Levy), 2nd & 3rd Entry \$15.00, 4th & 5th entries \$12, subsequent entries \$6.00. Veteran Sweepstakes \$5.00. Any dog entered in two or more classes \$25.00 for second and subsequent classes. <b>Non-Members:</b> 1st Entry - \$22.00 (incl Levy), 2nd & 3rd Entry \$18.00, 4th & 5th entries \$14, subsequent entries \$13.00. Veteran Sweepstakes \$5.00. Any dog entered in two or more classes \$25.00 for second and subsequent classes.
<b>Catalogues:</b>	Included with first entry
<b>Trophies (BOTH shows) :</b>	Prize – BIS, RUIS, All CIS Ribbon – BIG, RUIG, All CIG
<b>Exhibition Manager:</b>	Marlene Watt – 0417 897 921 (no calls after 8pm please)
<b>Entries To:</b>	SDHC Treasurer PO Box 569 HUMPTY DOO NT 0836
	
	Online Entries Preferred <a href="http://www.showmanager.com.au">www.showmanager.com.au</a>
<b>Direct Deposit and Internet Banking:</b>	Peoples Choice Credit Union Account Name : Show Dog Handlers Club BSB: 805 050    A/C: 62398228 Your EFT banking receipt must be sent with your entries or the entries may not be accepted.
<b>Notes:</b>	Membership: \$10 Double, \$7 Single – Financial year 1 Oct to 30 Sep.

## Show and Trial Schedules

**Entries Close 21 August 2017**

**13TH NATIONAL POODLE SHOW and  
RESTRICTED TO BREED OBEDIENCE TRIAL**

**HOSTED BY THE POODLE CLUB OF VICTORIA INC**

Saturday 23rd & Sunday 24th September, 2017  
At State Dog Centre KCC Park Westernport Hwy Skye

**JUDGES**

Mrs Sharon Pine-Haynes. (UK). Breed Judging & General Specials  
Mr Ross Carlson. UDX, UD, Novice  
Mrs Kim Houlden. Open, CCD

**Full schedule available from**

**Show Secretary:** MRS JO TURNLEY.PO BOX 686. RICHMOND. VIC. 3121  
poodleclubofvictoria@hotmail.com      0418 380 062 NO CALLS AFTER 9.00PM



**Entries Close 7 October 2017**



**Judge:** Mrs Lynn Leach (Canada)

**Event Manager:** Ms Tull Luttrell  
Ph: 0428123864

**Enquiries:** herdingnational@gmail.com or join our Facebook Group  
<https://www.facebook.com/groups/1326023180741592/>

Schedule available from the secretary; please email Lani Smith mdlmsmith@internode.on.net

Entries close October 7th 2017

## Litter Registrations

**KEY:** prefix, # males, # females, date of whelping, sire, dam, breeder, contact ph

### TOY

#### **CHIHUAHUA (Long)**

CHARDELL (3M) (2F) 26/12/2016  
 CHARDELL SMOKEY BEAR 8010005184  
 CH CHARDELL MISS UNIVERSE 8010004799  
 Mrs D Chard

#### **CHIHUAHUA (Smooth)**

CHARDELL (2F) 01/01/2017  
 CHARDELL BRAVO BUSTER 8010004872  
 CHARDELL KISS ME KATE 8010004871  
 Mrs D Chard

### TERRIER

#### **STAFFORDSHIRE BULL TERRIER**

DEKADANCE (2M) (3F) 29/01/2017  
 CH LILROCK GERONIMO 3100318025  
 DEKADANCE PRETTY VEGAS 8010006018  
 Mr A & Mrs R Fidler

### WORKING DOG

#### **AUSTRALIAN CATTLE DOG**

TAGETARL (3M) (4F) 17/12/2016  
 TAGETARL TROPIC THUNDER 8010005950  
 CH TAGETARL NOVEMBER RAIN 8010005267  
 Mr JS & Mrs CM Beckett

TAGETARL (1M) (1F) 25/12/2016  
 TAGETARL BRING DOWNTHE THUNDER 8010005949  
 CH TAGETARL BABY GOT BLUE GENES 8010005365  
 Mr JS & Mrs CM Beckett

#### **BELGUIM SHEPHERD DOG (Groenendael)**

DEKADANCE (3M) (5F) 22/01/2017  
 CH DELAROCHE CARBON COPY RN HSA<sub>s</sub> ET 5100061863  
 CH TARRARAY RASA ALIAS DAKOTA 2100411656  
 Mr A & Mrs R Fidler

### NON SPORTING

#### **FRENCH BULLDOG**

DEKADANCE (1M) (2F) 16/01/2017  
 ZENNHAUS CE GOT THE LOOK 6100097428  
 CH WILDBUNCH GUCCI GIRL 2100359934  
 Mr A & Mrs R Fidler

FRENCHTASTIC (1M) (2F) 04/01/2017  
 ANGELSENT MR BLUE BLAZER 2100441473  
 STRONGJEAN RAZZLE DAZZLE 4100251278  
 Ms A Carlisle

## **Titles Awarded**

**KEY:** Breed, new title, sire, dam, owner

### **AUSTRALIAN CHAMPION**

#### **TOY**

##### **LOWCHEN**

KILGARRIN DEFINATELY MAYBE 3100329383

*CH KILGARRIN RULED BY SECRECY*

*CH CARMEN CORDATA (Imp CZE)*

C Bartlett

#### **GUNDOGS**

##### **ENGLISH SPRINGER SPANIEL**

BURLISHCHARM BONITA 2100445982

*SUP CH KINSHERAN KILIMANJARO*

*CH KINSHERAN MAGDALENE*

SP & NB Jones

#### **WORKING DOG**

##### **AUSTRALIAN SHEPHERD**

SHARTOOZ ESPIONAGE 5100078881

*SILVANWOOD PRIME TARGET CD RE HTMS DWDFS*

*SHARTOOZ FREE B*

Ms L Asmussen

##### **AUSTRALIAN STUMPY TAILED CATTLE DOG**

TAGETARL STUMPY SHAKE IT OFF 8010006100

*CH TAGETARL STUMPY SOUNDWAVE*

*CH TAGETARL STUMPY EMPIREOFTHESUN*

Mr JS & Mrs CM Beckett

#### **UTILITY**

##### **ROTTWEILER**

VONHALLA DIAMOND 6100098109

*VONELKA CHADWICK [AI]*

*VALSTAM JULES LE REBEL (IID)*

Miss S Gordon

## Titles Awarded

**KEY:** Breed, new title, sire, dam, owner

### AUSTRALIAN CHAMPION

#### NON SPORTING

##### BRITISH BULLDOG

KELLANZ OKRE BUNDY OUTBACK [AI] 5100080325

*ROWENDALE RIPVAN WINKLE (UK)*

*CH KELLANZ CAYENNE CANTORA*

Mrs K Dehne

TUFFTRY TALK OF THE TOWN 8010005926

*KELLANZ OKRE BUNDY OUTBACK [AI]*

*BULDAWG MELISSA*

Mrs K Dehne

### AUSTRALIAN GRAND CHAMPION

#### TERRIER

##### AMERICAN STAFFORDSHIRE TERRIER

CH RAVINBOUTYA TWENTYFOUR SEVEN ET CA 4100230036

*SUP CH OZMYTE THE DEEDS DONE*

*PROAMSTAFS ROCKIN RAVIN*

M Boucher

### OBEDIENCE, RALLY O AND AGILITY TITLES

#### RALLY MASTER

##### ASSOCIATE REGISTER

LUCY LOU RAE 800627AR

Mrs L Denholm

#### GAMBLERS DOG

##### ASSOCIATE REGISTER

EVIE AD JD JDO JDX GD 800633AR

Ms K BOLTON

#### JUMPING DOG EXCELLENT

##### ASSOCIATE REGISTER

EVIE AD JD JDO JDX GD 800633AR

Ms K BOLTON

## Affiliated Clubs and Show Societies

### AFFILIATED CLUBS

#### Alice Springs Kennel & Dog Sports Club Inc

**Address:** PO Box 4482, Alice Springs 0871

**Contact:** 0438804705

**Email:** alicespringskennelclubinc@yahoo.com.au

**President:** Bob Whitehead

**Secretary:** Erica Whitehead

**Website:** <http://www.askcinc.com>

**Financial Year:** 1<sup>st</sup> January – 31<sup>st</sup> December **AGM:** October

**Training:** Show training - 3 Mondays preceding each show weekend.

**Club Comp:** All ASKC shows count towards Club Pointscore for Members

**Membership:** Contact the Secretary for more details

#### Canine Expo

**Address:** PO Box 36137, Winnellie NT 0821 **Ph:** 0419 851 283

**Contact:** Rebecca Williams

**Email:** canineexpo@outlook.com

**President:** Emma Carter

**Secretary:** Rebecca Williams

**Financial Year:** 1 July – 30 June

#### Darwin All Breeds Kennel Club

**Address:** PO Box 1887, Humpty Doo 0836

**Ph:** 0437 941 719

**Contact:** Charlene Savy

**Financial Year:** Commences 1 Nov **AGM:** Held at November show

**Membership:** Double \$10, Single \$8, Pensioner \$3.00

#### Darwin Ladies Kennel Club

**Address:** PO Box 2466, Palmerston 0831

**Ph:** 0417 897 921 (not after 8pm)

**Contact:** Sarah Gordon

**Financial Year:** 1 Jan to 31 Dec **AGM:** March - April

**Membership:** Single \$7, Double \$10

#### Darwin Obedience Dog Club Inc

**Address:** PO Box 37938, Winnellie 0821 **Ph:** 0400 245 619

**Contact:** Gloria Page

**Email:** jomi155@bigpond.com

**Website:** <http://www.dodc.org.au>

**Financial Year:** 1 April to 31 March **AGM:** May

**Training:**

**Obedience:** Monday's, NACA Dog Area, Winnellie 7.30pm

**Agility:** 2nd & 4th Wednesdays, NACA Dog Area, Winnellie 7.30pm

**Membership:** \$5 Joining Fee (Adults), \$10 Single, \$15 Double, \$20 Family (2 Adults and 2 Children)

**Club Comp:** Members Competitions

## Affiliated Clubs and Show Societies

### AFFILIATED CLUBS (continued)

#### **Fred's Pass Positive Dog Training Club Inc**

Address: PO Box 1167, Palmerston 0831

Ph: 0417 773 095

Contact: Sarah Baker

Website: <http://www.fppdt.org.au>

Financial Year: 1 Jan to 31 Dec                      AGM: February

Training: Fred's Pass Reserve - Tuesdays Obedience - 7pm, Thursdays Agility - 8pm

Membership: Single \$20, Double \$30, Family \$40

#### **Palmerston Gundog Club**

Address: PO Box 38851, Winnellie 0821

Ph: 0411 297 692 or Ah: 8988 6084

Contact: Merrilyn Robb

Email: [mdrobb@live.com.au](mailto:mdrobb@live.com.au)

Website: <http://palmerstongundogclub.wix.com/palmerstongundogclub>

Financial Year: 1 Jan to 31 Dec                      AGM: First or second week of February

Training: Retrieving training – arranged during the late wet thru dry season

Membership: Double \$15, Single \$12.50

Club Comp: Several perpetual trophies

#### **Show Dog Handlers Club**

Address: PO Box 40039, Casuarina 0811

Contact: Mrs Marlene Watt

Ph: home - 89 882125 mob - 0419189883 (no calls after 8pm please)

Email: [alfashir@optusnet.com.au](mailto:alfashir@optusnet.com.au)

Website: <http://showdoghandlers.wix.com/sdhc>

Financial Year: 1 Oct to 30 Sept                      AGM: April

Membership: Double \$12, Single \$10

### SHOW SOCIETIES

#### **Central Australian Show Society**

PO Box 2413, Alice Springs 0871

Ph: 8952 1651    Email: [cass@alice-springs.com.au](mailto:cass@alice-springs.com.au)

#### **Royal Agricultural Society of the NT**

PO Box 39600, Winnellie 0821

Ph: 8984 3091    Email: [ceo@darwinshow.com.au](mailto:ceo@darwinshow.com.au)

#### **Tennant Creek & District Show Society Inc**

PO Box 515, Tennant Creek, NT 0861

AGM: before end of November

Ph: 8962 1251 (May – July) 8962 2322 (August – April)    Email: [greg@marlowcanete.com.au](mailto:greg@marlowcanete.com.au)



## Scale of Fees

Effective 1st January 2016

<b>MEMBERSHIP</b>	\$	<b>AFFILIATION FEES</b>	\$
Joining	25.00	Show / Trial Clubs	102.00
Single	81.50	Specialist Clubs	61.00
Joint (2 Persons) (1 TDW)	122.50	Social Clubs	61.00
Junior	35.50		
Pensioner	55.00	<b>TITLE</b>	
Pensioner (2 persons)	92.00	Applications	30.50
* Handler (Junior)	15.00	Breeders certificate if lodged with title application	5.10
* Handler (Senior)	40.50	Breeders certificate NOT lodged with title application	20.00
* Associate Member	15.00	Grand Champion	51.00
(Conditions Apply)		Supreme champion (if submitted separate to Grand) application	31.00
<i>(NOTE: * no joining fee required)</i>		Supreme champion (if submitted with Grand) application	51.00
		Assessment of suspended dog	POA
<b>LITTER REGISTRATION</b>		<b>ENTRY FORMS</b>	
Per Dog:		Blank - Booklet of 100 Entries	20.50
In 3 Calendar months	30.50	Personalised – 30 printed Entries	30.50
3 to 6 months	51.00		
6 to 18 Months	92.00	<b>STATIONERY / OFFICE</b>	
Limited Register up to 3 months	20.50	Certificates & Cards	0.85
Limited Register 3 to 6 mnths	40.50	BIS/BIG Cards	1.35
Limited Register 6 to 18 months	61.00	Demountable Hire (up to 4 hours)	20.50
Associate Register	30.50	Search Fee Per Hour	51.00
Re-registration	102.00	Appeal/Complaint Fee	81.50
Reprint	20.50		
Transfer:		<b>A handling fee of \$ 25.00</b> may be charged for LATE lodgement paperwork or if any paperwork has to be returned due to incorrect monies or incorrect completion of forms.	
In 1 Month	25.50		
After 1 Month	40.50	<b>ADVERTISING TDW AND WEBSITE</b>	
Non Member	61.00	<b>Breeders Directory</b> (Jan-Dec)	
Lease Member	51.00	1 line	FREE
Export Pedigrees	102.00	Up to and including 8 lines and 1 picture (1 breed)	81.50
Transfer between registers	35.50	Schedules advert in TDW full page	51.00
		NT Clubs 1/2 page	35.50
<b>SEMEN REGISTRATION</b>		(Half Page is approx 25 - 30 lines)	
Dogs on ANKC Ltd database	30.50	National Show Schedules	56.00
Dogs NOT on ANKC Ltd database	102.00	General Advertising - 1/2 page	46.00
		General Advertising - 1/4 page	35.50
<b>KENNEL PREFIX</b>		General Advertising - front cover	81.50
Application incl online exam	153.00	Commercial Advertising	POA
Transfer of Breeders Prefix	102.00		
Annual Renewal	30.50	Show Societies	225.00
Prefix renewal to be reinstated plus annual renewal for each year lapsed	51.00		
		<i>NOTE: These prices are subject to change without notice.</i>	
<b>FEES</b>			
Levy per entry	2.00		
Ground Hire (per hour)	35.50		
Lights (per hour)	20.50		
<b>JUDGES</b>			
Application	40.50		
All Judges Licence Renewal	51.00		
Aspiring Judges Training Fee per Group	20.50		
Accredited Handler Judges Fee	20.50		
Theory Examinations	51.00		
Practical Examinations	102.00		

## Exhibition Dates 2017

ASK&DSC	Alice Springs Kennel & Dog Sports Club Inc	SDHC	Show Dog Handlers Club
DABKC	Darwin All Breeds Kennel Club	CASS	Central Australian Show Society
DLKC	Darwin Ladies Kennel Club	RASNT	Royal Agricultural Society of the NT
DODC	Darwin Obedience Dog Club	TCDSS	Tennant Creek & Dist Show Society
FPPDTC	Fred's Pass Positive Dog Training	CE	Canine Expo
PGC	Palmerston Gundog Club		

### JUNE 2017

2-4	OT/RO/AG/JD	DODC	Ms B Murfett (Qld)
9-10	OT/RO	FPPDTC	Ms E Temby (ACT)
11	RAT	PGC	Mr T Rees (NT)
18	RT	PGC	Mrs G Page (NT)
23-24	AG/JD	FPPDTC	S Baker (NT) C Carroll (NT)

### JULY 2017

7	CH	CASS	Mr T Tancred (NSW)
7	CH	ASK&DSC	Mr J Comerford (NSW)
8	CH/CH	ASK&DSC	Ms K McGhie (Qld) Ms A Collyer (Vic)
9	CH/CH	ASK&DSC	Mr W Burton (NSW) Ms M Clegg (Vic)
14-15	AG/JD/Games	FPPDTC	Ms K Olson (Tas)
14	CH	TCDSS	Mrs S Bownds (NSW)
15	CH	TCDSS	Mrs A Bowe (NSW)
22	CH/CH	SDHC	Mr J Camac (Vic) Ms Carol Gunn (Qld)
27-29	CH	RASNT	Mr A Jones (Tas)
27-29	OT/RO/AG/JD	RASNT	Mrs M Wheeler (NSWales) Ms C Carroll (NT) Ms S Baker (NT)
29	RT	PGC	Mr T Rees (NT)
30	RAT	PGC	Mr T Rees (NT)
30	CH (Spec)	PGC	Mrs S Meekings (Vic)

### AUGUST 2017

4-6	CH x 5	CE	Mr A Burt (Victoria) Mrs P Bruce (Canada) Mr P Delerue (Portugal) Ms J Oliver (Victoria) Mr A Czegledi (Hungary)
11-12	AG/JD x 2	FPPDTC	Ms V Dowsen (NSW)
18-20	OT/RO/AG/JD	DODC	Ms H Diamond (Vic)
25-26	AG/JD x 2	FPPDTC	Ms A Gniel (Qld)

